



**Resources Department  
Town Hall, Upper Street, London, N1 2UD**

---

## **AGENDA FOR THE ENVIRONMENT AND REGENERATION SCRUTINY COMMITTEE**

---

Members of the Environment and Regeneration Scrutiny Committee are summoned to a meeting, which will be held in Council Chamber, Town Hall, Upper Street, N1 2UD on **21 July 2022 at 7.30 pm.**

Enquiries to : Thomas French  
Tel : 020 7527 6568  
E-mail : [thomas.french@islington.gov.uk](mailto:thomas.french@islington.gov.uk)  
Despatched : 13 July 2022

### Membership

Councillor Tricia Clarke (Chair)  
Councillor Gary Heather (Vice-Chair)  
Councillor Clare Jeapes  
Councillor Fin Craig  
Councillor Mick Gilgunn  
Councillor Ruth Hayes  
Councillor Claire Zammit  
Councillor Angelo Weekes  
Councillor Ernestas Jegorovas-Armstrong

### Substitute Members

Councillor Praful Nargund  
Councillor Caroline Russell

**Quorum is 4 members of the Committee**



<b>A. Formal Matters</b>	<b>Pages</b>
1. Apologies for Absence	
2. Declarations of Substitute Members	
3. Declarations of Interest	

If you have a **Disclosable Pecuniary Interest\*** in an item of business:

- if it is not yet on the council's register, you **must** declare both the existence and details of it at the start of the meeting or when it becomes apparent;
- you may **choose** to declare a Disclosable Pecuniary Interest that is already in the register in the interests of openness and transparency.

In both the above cases, you **must** leave the room without participating in discussion of the item.

If you have a **personal** interest in an item of business **and** you intend to speak or vote on the item you **must** declare both the existence and details of it at the start of the meeting or when it becomes apparent but you **may** participate in the discussion and vote on the item.

- \*(a) **Employment, etc** - Any employment, office, trade, profession or vocation carried on for profit or gain.
- (b) **Sponsorship** - Any payment or other financial benefit in respect of your expenses in carrying out duties as a member, or of your election; including from a trade union.
- (c) **Contracts** - Any current contract for goods, services or works, between you or your partner (or a body in which one of you has a beneficial interest) and the council.
- (d) **Land** - Any beneficial interest in land which is within the council's area.
- (e) **Licences** - Any licence to occupy land in the council's area for a month or longer.
- (f) **Corporate tenancies** - Any tenancy between the council and a body in which you or your partner have a beneficial interest.
- (g) **Securities** - Any beneficial interest in securities of a body which has a place of business or land in the council's area, if the total nominal value of the securities exceeds £25,000 or one hundredth of the total issued share capital of that body or of any one class of its issued share capital.

This applies to **all** members present at the meeting.

4. Minutes of Previous Meeting	1 - 6
5. Chair's Report	
6. Order of Business	

7. Public Questions

For members of the public to ask questions relating to any subject on the meeting agenda under Procedure Rule 70.5. Alternatively, the Chair may opt to accept questions from the public during the discussion on each agenda item.

<b>B.</b>	<b>Items for Decision/Discussion</b>	<b>Pages</b>
1.	Scrutiny Review- Overview of the Circular Economy Action Plan	7 - 26
2.	Quarter 4 Performance Indicator Reports 2021/22 - Libraries and Heritage	27 - 32
3.	Net Zero Carbon Programme review 2021-22	33 - 84
4.	Scrutiny Initiation Document: Circular Economy 2022/23 <i>To follow</i>	
5.	Workplan 2022/23	85 - 86

**C. Urgent non-exempt items (if any)**

Any non-exempt items which the Chair agrees should be considered urgent by reason of special circumstances. The reasons for urgency will be agreed by the Chair and recorded in the minutes.

**D. Exclusion of press and public**

To consider whether, in view of the nature of the remaining items on the agenda, it is likely to involve the disclosure of exempt or confidential information within the terms of the Access to Information Procedure Rules in the Constitution and, if so, whether to exclude the press and public during discussion thereof.

**E. Confidential/exempt items** **Pages**

**F. Urgent exempt items (if any)**

Any exempt items which the Chair agrees should be considered urgently by reason of special circumstances. The reasons for urgency will be agreed by the Chair and recorded in the minutes.

The next meeting of the Environment and Regeneration Scrutiny Committee will be on  
**6 September 2022**

This page is intentionally left blank

# Agenda Item 4

London Borough of Islington

## **Environment and Regeneration Scrutiny Committee - 14 June 2022**

Minutes of the meeting of the Environment and Regeneration Scrutiny Committee held at Town Hall on 14 June 2022 at 7.30 pm.

**Present:**      **Councillors:**      Clarke (Chair), Heather (Vice-Chair), Jeapes,  
Hayes, Zammit, Weekes and Jegorovas-Armstrong

### **Councillor Tricia Clarke in the Chair**

1      **APOLOGIES FOR ABSENCE (Item 1)**

Apologies were received from Councillors Finn and Craig.

2      **DECLARATIONS OF SUBSTITUTE MEMBERS (Item 2)**

None.

3      **DECLARATIONS OF INTEREST (Item 3)**

None.

4      **MINUTES OF PREVIOUS MEETING (Item 4)**

RESOLVED:

That the minutes of the meeting held on 07 March 2022 be confirmed as an accurate record of proceedings and the Chair be authorised to sign them.

5      **MEMBERSHIP, TERMS OF REFERENCE AND DATES OF MEETINGS (Item 5)**

RESOLVED:

Membership and Terms of Reference were agreed

6      **CHAIR'S REPORT (Item 6)**

The Chair welcomed Dr Daniel Evans, Cranfield University, with Charlotte Glazier, Greening the Public Realm Programme Manger to give a presentation on the Urban Agriculture STFC project Urban Cultivate. The presentation highlighted the work of the benefits of Urban Agriculture and the Rurban Revolution project.

The Chair thanked Dr Daniel Evans and Charlotte Glazier for the presentation and welcomed members to raise issues and ask questions.

On vacant spaces being identified, a map of underutilised areas will be explored to see if they will beuseful for growing food or for another environmental reason. Lots of unconventional spaces are being looked at and hopefully will become community assets.

On diversity in the community, the project is reaching out continuously to the community to ensure that there is a lot of diverse representation. Working with the local Octopus Community Network has helped get the community involved in a big way.

On the suitability of the size of the spaces, when mapping sites, size of food cultivation is important, but even the smallest of spaces can be used for waste collection or soil formation.

On the sustainability of the spaces, it is a bit early to say how many future sites will be non-profit, but in the phase of the project, the stakeholders will be very useful in deciding how resilient and sustainable sites can be, and if they will be able to work within the food chain.

On using rooftops, while it will be possible to expand the acreage of food growing across rooftops, and while not all crops will be suitable, the evidence suggests that rooftops can be useful for food growing and will have a place in the future of the project.

The Chair invited Dr Daniel Evans to come back to a future committee meeting to give a project progress update.

**7 ORDER OF BUSINESS (Item 7)**

The order of business would be as stated the agenda.

**8 PUBLIC QUESTIONS (Item 8)**

None.

**9 QUARTER 4 PERFORMANCE REPORT: PLACE AND ENVIRONMENT (Item B1)**

Cllr Rowena Champion, Executive Member for Environment, Air Quality and Transport was present, together with Keith Townsend, Corporate Director Environment and Regeneration for discussion of this item and made a presentation to the Committee, copy interleaved. The following points were highlighted:

Audited quarterly recycling rate data from Waste Data Flow (the national waste and recycling performance database) usually comes in around three months after the end of the quarter with Q1-Q3 now showing at 29.3%. This compares to the overall 20/21 outturn of 31.3% and against the higher 21/22 target of 32%. However, due to some technical issues with tonnage data recording, the year-to-date rate does not contain all available data and this will be adjusted in due course in Q4. We are currently projecting an end-of-year rate of a little over 30%.

The Chair thanked Cllr Champion for the presentation and welcomed members to raise issues and ask questions.

On what can be done to reach further recycling rates, while Islington has one of the lowest rates of producing waste in the country, and the waste hierarchy is very clear throughout all of the council's work, it is important that the council continues to work towards 40 per cent by 2030. Service work changes include increase food waste recycling on estates, more capturing of recycling, but a large investment is still needed to ensure recycling is being done at a larger rate.

On food waste recycling, focusing on private housing blocks to take up food recycling in their communal waste points. There are a few barriers to this, including the space to house this within accommodation, but working with resident's groups and managing agents to ensure that food waste provision exists. A pilot project on food waste on shops is being rolled out, in a new area for the council.

On understanding recycling data, the data published is the real recycling data and excludes anything lost due to contamination. The level of contamination is relatively low in household waste, but this is higher in estate waste, due to the nature of the waste. Work is being done to continue to drive down contamination levels.

On cleaning of food waste bins, the perception of food waste has a perception of being unclean and the more attractive you can make this for residents the better, currently it is once a year, but officers will come back to the committee on any areas where this is having an impact. Action.

On bike parking, there is a commitment to installing 100 bike hangers, with a similar commitment with estate bike parking too. There is demand for more cycling hangers and the council is looking to use more digital technology to ensure residents can book spaces.

On parking for different vehicles, there are a range of parking charges across the borough, with the idea to move away from polluting vehicles. However, cycle parking seems higher than car parking in places, but it costs a lot for the council to install cycle parking structures, but economically car parking less so. The council will continue to review parking charges.

10

## **QUARTER 4 PERFORMANCE REPORT: INCLUSIVE ECONOMY AND JOBS** **(Item B2)**

Cllr Santiago Bell-Bradford, Executive Member for Inclusive Economy and Jobs, was present, together with Caroline Wilson, Director of Inclusive Economy and Jobs for discussion of this item and made a presentation to the Committee, copy interleaved. The following points were highlighted:

The Council's corporate plan 2018-22 set out an objective to 'Deliver an Inclusive Economy', supporting people into work and helping them with the cost of living. As part of delivering this objective, the Council set a target of supporting 4,000 residents into employment over a 4-year period. The target for this year was 1,000 residents placed in paid employment. We have surpassed the target by supporting 2,120 residents this year and by the end of March 2022 had successfully placed 5,778 residents into employment. This reflects the embodiment of the Islington Working Partnership who this year have collectively contributed 82% of the overall outcomes (1,738 people), with the remaining 18% (382 people) being supported into paid employment by council services.

We continue to report strong outcomes for Black Asian and Minority Ethnic residents with 1,061 people supported into paid employment by the end of Quarter 4 exceeding the year-end target of 600. The Council has recently completed work with London Metropolitan University to explore the nature of unemployment for specific Black, Asian and Minority Ethnic communities in the borough. The research comprised both quantitative and qualitative analysis through a series of focus groups. The final report provided recommendations on how to better connect and support residents from marginalised communities, along with a specific targeted approach. The research highlighted that those most in need of support are residents who describe themselves as African (particularly

North and East African), Black Caribbean, Turkish, Bangladeshi, and Other Black. In 2022-23 in addition to a yearly target for Black Asian and Minority Ethnic residents we will have specific targets for specific sub groups.

We will continue to focus on apprenticeships in 2022-23 as we want to support local employers to address their skills shortages through investing in their workforce. We are doing this through the offer of a levy transfer to smaller employers who pay the living wage. We have found that employers are keen for employees to be able to hit the ground running so we are developing a strong communications campaign to re-engage more employers with the benefits of apprenticeships. We are also continuing to raise this with schools as we have not seen high demand for information about apprenticeships through our 100 hours of the World of Work programme despite an event in February 2022 for parents being well received with 30 attending.

The Chair thanked Cllr Bell- Bradford for the presentation and welcomed members to raise issues and ask questions.

On apprenticeships, there is a target of 1,000 apprenticeships, which goes along side the new strategy that will support the overall corporate plan, post-election. These apprenticeships will be internal and external, alongside the council's anchor institutions, and local employers. The strategy will be brought back to the committee.

On the importance of case studies, the council held a celebration event for apprenticeships, where many successful apprentices spoke of the help it gave them, it was important to hear these, as it shows how important these schemes can be. Officers will provide members with case studies. Action.

On those not wanting to work, post pandemic there has been a rise in this area, and a lot of it is from those with mental health issues. It is something that the council will interrogate further, and officers will make sure those who are able to, get full allowance of benefits for support.

On comparisons between different councils, while many London boroughs do not offer coordinated support and Islington is in the cutting edge in this area. Officers will try and provide more comparisons on future reports.

On London Living Wage Employers, Arsenal FC have shown recently shown an interest in becoming an accredited London Living Wage Employer, this has been an aim of the council as one of the more notable employers in the borough. Generally, the council will be working further with employers across the borough on the living wage. There is a target of 450 businesses getting their accreditation, which will have an impact on residents who are employed by them.

11

**WORK PROGRAMME 2022/23 AND SCRUTINY TOPIC (Item B3)**

The Chair presented the draft Work Programme 2022/23 to the committee and highlighted the suggestions that members had sent to the Chair in the run up to the committee meeting.

Members agreed the following:

- The main scrutiny topic is The Council's Net Zero Carbon 2030 Strategy with a focus on the Circular Economy and Jobs.
- One off Scrutiny reports will cover the following:
  - Menstrual Waste



## Environment and Regeneration Scrutiny Committee - 14 June 2022

- Last Mile Delivery
- Urban Agriculture
- An Informal Working Group on Affordable and Sustainable Energy
- Quartey Reports to come to committee on the progress of the Net Zero Carbon Strategy 2030
- Presentations from North London Waste Authority and Better Leisure

Subject to the above amendments, the draft work programme was approved. It was noted that the work programme would continue to be updated throughout the year.

The meeting ended at 20:55

**CHAIR**

This page is intentionally left blank

# Circular Economy Action Plan Overview

Page 7

Net Zero Carbon Programme Update

Environment and Regeneration Scrutiny Committee

21 July 2022

Agenda Item B1

# Contents

- What is a circular economy and why is it important? (Page 3)
- Overview of Islington's Circular Economy Action Plan (Page 7)
- Delivery through the Net Zero Carbon Programme (Page 11)
- Next steps (Page 20)

Page 8

# What is a circular economy and why is it important

Page 9

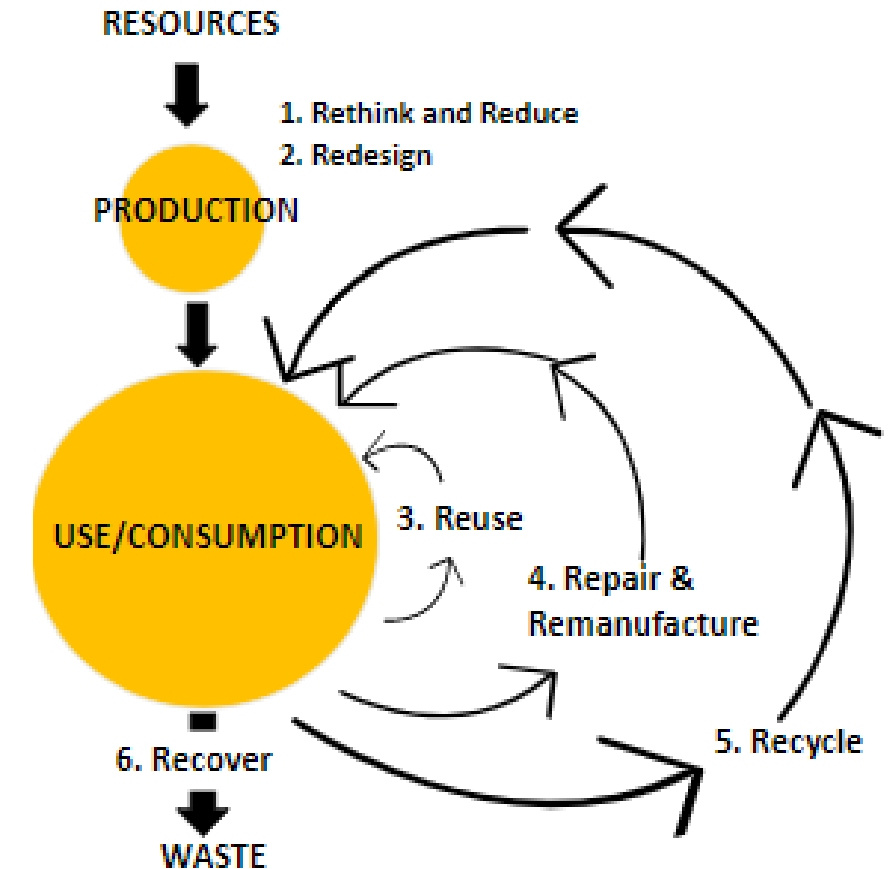
A circular economy (CE) is an alternative to a linear 'take, make, dispose' economy and is based on three principles: eliminate waste and pollution, circulate products and materials, and regenerate nature.



# Circular economy model

- The model (right) shows parts of a circular economy and examples of interventions at each point the cycle.
- (1) Rethink and reduce e.g. Library of Things
- (2) Redesign e.g. new homes design guide
- (3) Repair & remanufacture e.g. repair cafes
- (4) Reuse e.g. Dress for Success
- (5) Recycle e.g. bulky item recycling
- (6) Recover e.g. energy from waste (last resort)

Page 11



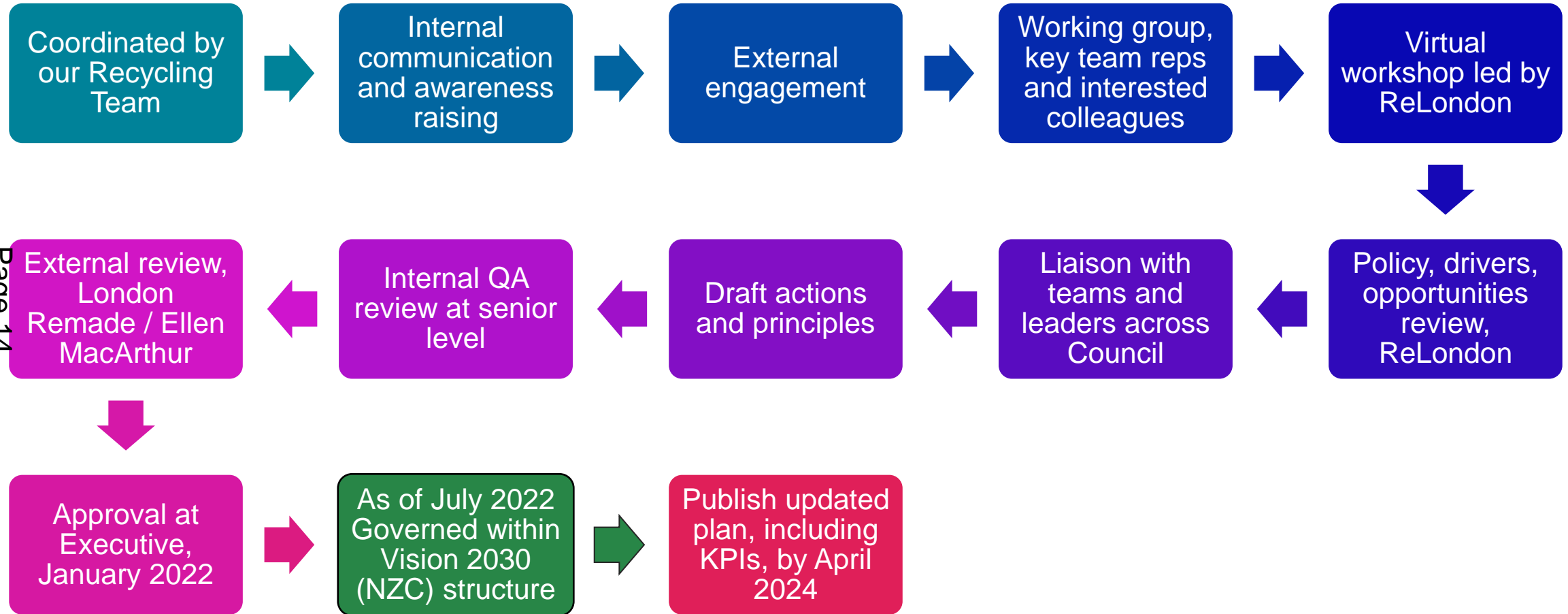
# A circular economy tackles consumption based emissions

- Islington generates an estimated **two million tonnes of consumption based CO2 emissions per year** (also known as scope 3 emissions). (London Councils, 2021)
- For context, **scope 1** (direct and local, e.g. burning gas in boilers to heat homes and businesses or petrol/diesel vehicle emissions), and **scope 2 emissions** (indirect, e.g. from using electricity generated in another location) account for **680,000 tonnes of CO2e per year** (2005 – 2018 figures; BEIS, 2020).
- A circular economy can help to tackle consumption related (scope 3) emissions, and scope 1 and 2 emissions



# Circular Economy Action Plan Overview

# Development of our Circular Economy Action Plan



# Action Plan Content

Our Circular Economy Action Plan was **developed to explore possibilities** for CE in Islington, and sets out:

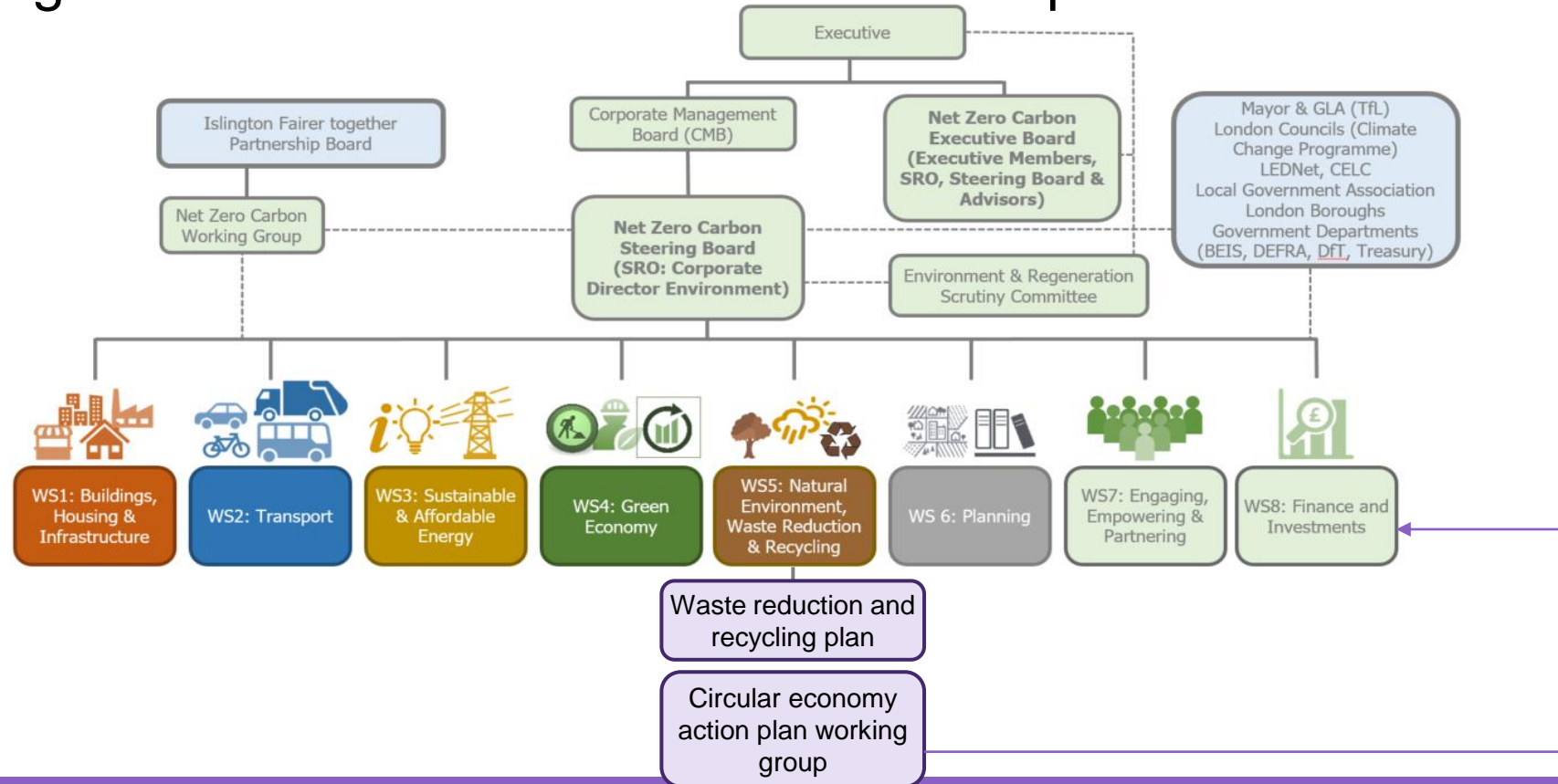
- how we will apply circular economy principles to our policies and strategies
- actions we are already taking
- additional actions we are committing to

Page 15 The Plan focuses on eight areas broadly aligned with Vision 2030 priorities, and is:

- the start of the journey
- about embedding principles
- a foundation for action

# Governance

- An internal working group has been established and actions are owned across NZC's eight work streams and other relevant departments.



# Delivering the Circular Economy Action Plan through the Net Zero Carbon Programme

# Circular economy is already in action in Islington

The following section provides a snapshot of what we have done already and what we will do next





# Buildings, homes and infrastructure

## We have

- Included circular economy requirements and KPIs focusing on refurbishment, flexibility of use, and recycling of waste materials in the New Homes Guide

## We will

- Manage council assets based on longevity and flexible use, community benefit and sustainable refurbishment where required

# Transport

## We have

- Retrofitted our first e-RCV, with a second on order
- Provided support for car clubs and cargo bikes
- Reuse material in our road maintenance program

Page 20

## We will

- Retrofit eight eRCVs over two years
- Reduce our overall fleet size, move to electric and retrofit where appropriate



# Sustainable and affordable energy

## We have

- Delivered Bunhill 2 heat & power networks and are developing GreenSCIES

## We will

- Work with partners to raise awareness of the circular economy and share best practice
- Celebrate circular economy at our Islington Sustainability Awards

# Waste reduction and recycling

## We have

- Delivered various reuse and waste minimisation initiatives
- Managed digital infrastructure on circular economy principles (cloud services, leasing, reuse)
- Opened our first 'Library of Things'

Page 22

## We will

- Investigate reusing more material more locally from our Reuse and Recycling Centre
- Investigate supporting more Library of Things, makerspaces and other sharing initiatives
- Support repair services directly and through communications and improving access and visibility
- Incorporate circular economy principles in a new Food Strategy

# Green Economy & Planning

## We have

- Required CE statements for large planning applications
- Launched CE grant scheme for SMEs

## We will

- Progressive Procurement Policy to include specific CE requirements such as 'product as services'
- Inclusive Economy Team will support SME's aiming to be more 'circular'
- Celebrate CE at our Islington Sustainability Awards

# Case study: circular economy grantees

- The council delivered a grant scheme in partnership with [ReLondon](#).
- 22 SMEs across a range of services were awarded £5-10k grants to help adapt to circular working practices.

Page 24

CM Upholstery Ltd - 173 Stroud Green Rd, N4 3PZ	▼
E-scooter Ltd - 346 Caledonian Rd, N1 1DU	▼
Fair-Well (Jerilee & Claire Ltd.) - 16 Dartmouth Park Hill, NW5 1HL	▼
Fone Us London - 42 Junction Road, N19 5RD	▼
Fonthill R&K Ltd. - 134 Fonthill Road	▼
Gala Creations Ltd. - Goldsmiths Centre, EC1M 5AD	▼
Girasole - 150 Seven Sisters Rd, N7 7PL	▼
Goodmine (online)	▼
Housmans Bookshop Ltd. - 5 Caledonian Rd, N1 9DX	▼
Junee	▼
KIND2 Ltd. (Online)	▼
Look Mum No Hands - 49 Old St, EC1V 9HX	▼
Mer-IT Digital	▼

# Engaging, partnering and empowering

## We have

- Incorporate CE principles into our wider communications

## We will

- Work with 'Anchor institutions' (Arsenal FC, NHS etc) to deliver CE actions in their organisations
- Support sharing schemes and deliver repair cafes at community centres
- Look to deliver more adult learning courses e.g. repair skills and DIY

# Next steps

## Ongoing review

- New initiatives – horizon scanning
- Learn lessons
- Internal and external awareness raising

Page 26

## Deliver, monitor and measure

- Bi-monthly working group and work stream delivery teams to ensure CE embedded and actions delivered
- Performance indicators to be developed

## Update

- Publish new, updated Circular Economy Action Plan by April 2024

## Report of: Interim Director of Children's Services, Corporate Director

<b>Meeting of:</b>	<b>Date:</b>	<b>Ward(s):</b>
Environment and Regeneration Scrutiny Committee		All
<b>Delete as appropriate</b>		Non-exempt

### **SUBJECT: Libraries and Heritage Services Quarter 4 2021/22 Performance Report**

#### **1. Synopsis**

- 1.1 The council has in place a suite of corporate performance indicators to help monitor progress in delivering the outcomes set out in the council's Corporate Plan. Progress on key performance measures is reported through the council's Scrutiny Committees on a quarterly basis to ensure accountability to residents and to enable challenge where necessary.
- 1.2 This report sets out 2021-22 Quarter 4 progress against targets for those performance indicators that fall within the Libraries and Heritage outcome area, for which the Environment and Regeneration Scrutiny Committee has responsibility.

#### **2. Recommendations**

- 2.1 To note performance against targets in 2021-22 Quarter 3 (1<sup>st</sup> April – 30<sup>th</sup> March 2022) for measures relating to Libraries and Heritage outcomes in Environment and Regeneration.

#### **3. Background**

- 3.1 A suite of corporate performance indicators have been proposed for 2018-22, which help track progress in delivering the seven priorities set out in the Council's Corporate Plan - *Building a Fairer Islington*. These continue to be reviewed, to ensure that they are fit for purpose, both providing Committee with a measure of overall performance, as well as stretching services to meet the exceptional economic circumstances we now face. Targets are set on an annual basis and performance is monitored internally, through Departmental Management Teams, Corporate Management Board and Joint Board, and externally through the Scrutiny Committees.
- 3.2 The Environment and Regeneration Scrutiny Committee is responsible for monitoring and challenging performance for the following key outcome area of delivering an inclusive economy, supporting people into work and helping residents get the skills they need to secure a good job.

#### 4. Quarter 4 performance update – Outcome: Help residents get the skills they need to secure a good job

##### 4.1 Key performance indicators relating to 'Help residents get the skills they need to secure a good job'

PI No.	Indicator	2019/20 Actual	2020/21 Actual	2021/22 Target	Q4 21-22	On target?	Q4 last year	Better than Q4 last year?
JM8	<b>Corporate Indicator:</b> Number of new library members since library closures, with sub-target for:	N/A	1,425	1,400 (Q1 and Q2 only)	<b>4,716</b>	Above	1,425	Yes
	<b>Corporate indicator</b> Number of library visits, with sub-targets for:	1,023,635	Was replaced due to Covid	500,000 (Q3 and Q4 only)	<b>342,384</b>	No	N/A	N/A
JM9	<b>Corporate indicator</b> a) Take up of e-resources (e-audio books, e-newspapers and magazines)	N/A	242,372	240,000	<b>244,920</b>	Yes	242,372	Stable
	b) Number of online and face-to-face events and activities	N/A	151	240	<b>1,108</b>	Above	151	Yes

##### 4.2 Corporate Indicator JM8 - Number of new library members since library closures / Number of library visits

The corporate indicator reporting the number of library visits was replaced by the "Number of new library members since library closures" indicator due to Covid-19 in 2020-21. Due to ongoing restrictions, the service continued to report on this indicator during the first half of 2021-22 as the libraries started to reopen. The service achieved its target of 1,400 new members set for Q1 & Q2 with 4,716 new library members during this period.

From quarter 3 onwards, as the libraries fully re-opened, the service was once again able to report on "The number of library visits" indicator. Visit figures for Q3 and Q4 were below the target of 500,000. The target was an estimate based on previous visits figures in 2019. However, this estimate did not take into account the continuing impact of COVID and the ongoing prevalence of the virus in the community. This has impacted on the number visits and library members have not returned to their pre-pandemic visiting habits. Library members still appear to be nervous about returning to shared public spaces. In addition to this issue, Central Lending library was closed between 4 Oct - 30 January for a complete refurbishment, which impacted upon visit figures. The library is the largest and busiest library that records the highest number of visits.

In order to improve visit figures and encourage library users to return to us, the service restarted in-person events and over the past two quarters have seen a month-on-month increase in usage. The service has an e-bulletin where activities, events and news are promoted to users with a view to encouraging them to return to us. The active Twitter account promotes events and stock and



encouraging users to visit. During the lockdown, we saw a massive increase in take up of our online resources.

This trend has continued and our online usage for 2021/22 is slightly above 2020/21. However, this success means that users do not have to visit us as they can get access to their books and resources online.

#### 4.3 **Corporate Indicator JM9a - Take up of e-resources (e-audio books, e-newspapers and magazines)**

This was a new corporate indicator for 2020-21 that is presented as a sub-target for the "New library members since library closures" indicator.

Q4 figure of 244,920 were above the target of 240,000 take up by 2% and slightly above 2020-21 figure.

In June the Libraries service transferred to a new platform for e-newspapers and magazines and experienced some technical difficulties which resulted in a reduction in usage for the first part of the year. These technical issues were resolved in Q2 and the service is saw a continuing increase in the usage in Q3 and Q4.

Uptake of resources in 2021 in comparison with 2020

	Q1 2021	Q1 2020	Q2 2021	Q2 2020	Q3 2021	Q3 2020	Q4 2021	Q4 2020	Percentage difference for whole period
<b>E Books</b>	5,451	5,799	5173	5384	5511	4932	5797	6812	-4.0
<b>E Audio books</b>	8,021	6,679	7275	7132	8143	6668	9190	8824	+11
<b>Newspapers and magazines</b>	45,425	46,755	45,651	42,943	49171	48040	48373	50406	+1.0
<b>Digital comics</b>	278	884	105	367	156	424	216	323	-62.2
<b>Totals</b>	59,175	60,117	59,204	58,826	62,981	60,064	63,576	66,365	+1.00

#### 4.4 **JM9b - Number of online events and face-to-face activities**

This was a new indicator that the libraries service started reporting on from 2020-21 Quarter 3, reporting the number of only online events and activities. The service also measured face-to-face activities and events as part of this indicator in 2021-22.

At the end of Q4, a total of 1,108 online and face-to-face events were offered. This is considerably above the target of 240 for the financial year. This target was an estimate based on us only being able to offer online events due to continuing limitations on events due to COVID. However, the overachievement of this indicator is due in the main to us being able to restart in-person events at all libraries and the museum from 1<sup>st</sup> November 2021. School and nursery classes have also started to return to the service and we have had a number of events and activities for schools. Some of the in-person activities included Baby Bounce and Under-fives sessions in all libraries and the museum, Reading groups, Christmas craft sessions for children, HAF activities including distribution take and make food boxes to targeted families.

## 5. **Implications**

### 5.1 **Financial implications:**

The cost of providing resources to monitor performance is met within each service's core budget.

---

### 5.2 **Legal Implications:**

There are no legal duties upon local authorities to set targets or monitor performance. However, these enable us to strive for continuous improvement.

---

### 5.3 **Environmental Implications and contribution to achieving a net zero carbon Islington by 2030:**

There is no environmental impact arising from monitoring performance.

---

### 5.4 **Resident Impact Assessment:**

The council must, in the exercise of its functions, have due regard to the need to eliminate discrimination, harassment and victimisation, and to advance equality of opportunity, and foster good relations, between those who share a relevant protected characteristic and those who do not share it (section 149 Equality Act 2010).

The council has a duty to have due regard to the need to remove or minimise disadvantages, take steps to meet needs, in particular steps to take account of disabled persons' disabilities, and encourage people to participate in public life. The council must have due regard to the need to tackle prejudice and promote understanding.

---

### 5.5 **Conclusion**

The Council's Corporate Plan sets out a clear set of priorities, underpinned by a set of firm commitments and actions that we will take to work towards our vision of a Fairer Islington. The corporate performance indicators are one of a number of tools that enable us to ensure that we are making progress in delivering key priorities whilst maintaining good quality services.

---

6. It is evident that the Covid-19 crisis has had, and will continue to have, significant impact on progress against targets for those performance indicators that fall within the Jobs and Money outcome area. As the economy and labour market change, it is likely that a corresponding evolution of the performance reports to this Committee will be needed to ensure that it is able to provide oversight and challenge to the relevant Services.

6.1 **Signed by:**

Date: 8 February 2022

Jon Abbey, Director of Children's  
Services

Akeel Ahmed, Assistant Director of  
Community Wealth Building

Sarah Callaghan, Director of Learning  
and Culture

Dave Hodgkinson, Corporate Director,  
Resources

Report Author:

Head of Service for: Libraries and  
Heritage

This page is intentionally left blank

# Net Zero Carbon Strategy Annual Progress Report 21/22

Page 33

Environment and Regeneration Scrutiny Committee

21 July 2022

Agenda Item B3

# Synopsis

- Progress towards delivering commitments in the Net Zero Carbon 2030 strategy is reported quarterly through Council's Scrutiny function
- Ensures transparent progress reporting, easily accessible to the community and accountability to residents
- Summary annual report highlighting progress to date published in March 22
- Net Zero Carbon Strategy Annual Progress Report 21/22 details progress against each commitment and our plans for next steps

Page 34

Updates are organised according to the **eight programme workstreams**:

- 1. Buildings, Housing, Commercial and Infrastructure
- 2. Transport
- 3. Sustainable and Affordable Energy
- 4. Green Economy
- 5. Natural Environment, Waste Reduction and Recycling
- 6. Planning
- 7. Engaging Empowering and Partnering
- 8. Finance and Investment



# Key progress highlights

## WS1: Buildings, Housing, Commercial and Infrastructure

- Partnered with UCL to complete an analysis of retrofitting and energy change options for existing council housing stock
- Four pilot estates selected for large-scale trial of low carbon heating solutions (delivery subject to feasibility)
- Developed decarbonising new homes and tree mitigation strategies
- Secured funding to carry out feasibility studies for 20 schools
- Secured funding to implement decarbonisation measures at New River College school. The work carried out will act as a pilot for future work carried out at other schools in the borough
- Launched a business audit scheme for small businesses for energy efficiency improvements

# Key progress highlights

## WS2: Transport

- Established 35 School Streets covering almost half of schools; the highest percentage in London
- The first two main road school streets environmental improvements were delivered in April 2022 at Ambler Primary school on Blackstock Road and Canonbury Road primary
- Delivered eight low-traffic neighbourhoods (LTNs) trials (plus a similar scheme at Mayton Street).
- Cycleways completed at: Green Lanes, Balls Pond Road, York Way, Highbury Fields to Finsbury Park (Cycleway 38 North), and Holloway Road to Pentonville Road (Cycleway 38 South)
- 336 electric vehicle charging points delivered by end of March 2022
- 14% of the council fleet was electric at December 2021
- Introduced emissions-based parking charges for petrol and petrol hybrid vehicles (an addition to the existing surcharge of £5 per hour for all diesel vehicles paying for short stay parking, established in 2018.)
- Installed electric charging bollards across all Regent's Canal moorings in Islington



# Key progress highlights

## WS3: Sustainable and Affordable Energy

- GreenSCIES2 partnership, supported by Innovate UK and including Islington Council, concluded at end of May 2022, delivering substantial set of engineering and architectural design work, financial modelling, and community engagement resources for handover to Islington Council
- 100% of electricity procured by the council is now from certifiable renewable sources
- Energy Advice (SHINE) service made 1,021 home visits saving people £92,911 = ~378 tonnes CO2
- Delivered energy efficiency measures to 53 properties (including council and privately owned and rented homes). These measures included wall, loft & underfloor insulation & secondary glazing

Page 37

## WS4: Green Economy

- Allocated £200,000 to a training and development programme for local aspiring or start up circular economy businesses
- Launched the Islington Working portal providing local jobs for local people, useful travel plans and promotes a lower carbon footprint as part of our commitment to a greener local economy
- Together Greener website now has a section for business advice (awareness, action, grants)
- Started a Low Plastic Zone project at Cally Road

# Key progress highlights

## WS5: Natural Environment, Waste Reduction and Recycling

- Community-led boroughwide green proposals programme 'Islington Greener Together' launched in March 2022 and received 94 applications
- Planted 700 trees in the 2021/2022 planting season
- Secured £1.5 million over 3 years to invest in greening improvements in the public realm
- Launched Library of Things at the Finsbury Park Bright Sparks store with 81 items borrowed between 1 November and 31 December 2021, saving a tonne of waste.
- £100,000 per annum of funding secured to improve communal recycling sites at estates
- Completed new Commercial Waste Strategy

## WS6: Planning

- New Local Plan is being progressed through adoption process
- Secured funding to appoint an officer to develop Supplementary Planning Document (SPD) on delivering net zero carbon improvements, to be appointed once the Plan is finalised.

# Key progress highlights

## WS7: Engaging, Empowering and Partnering

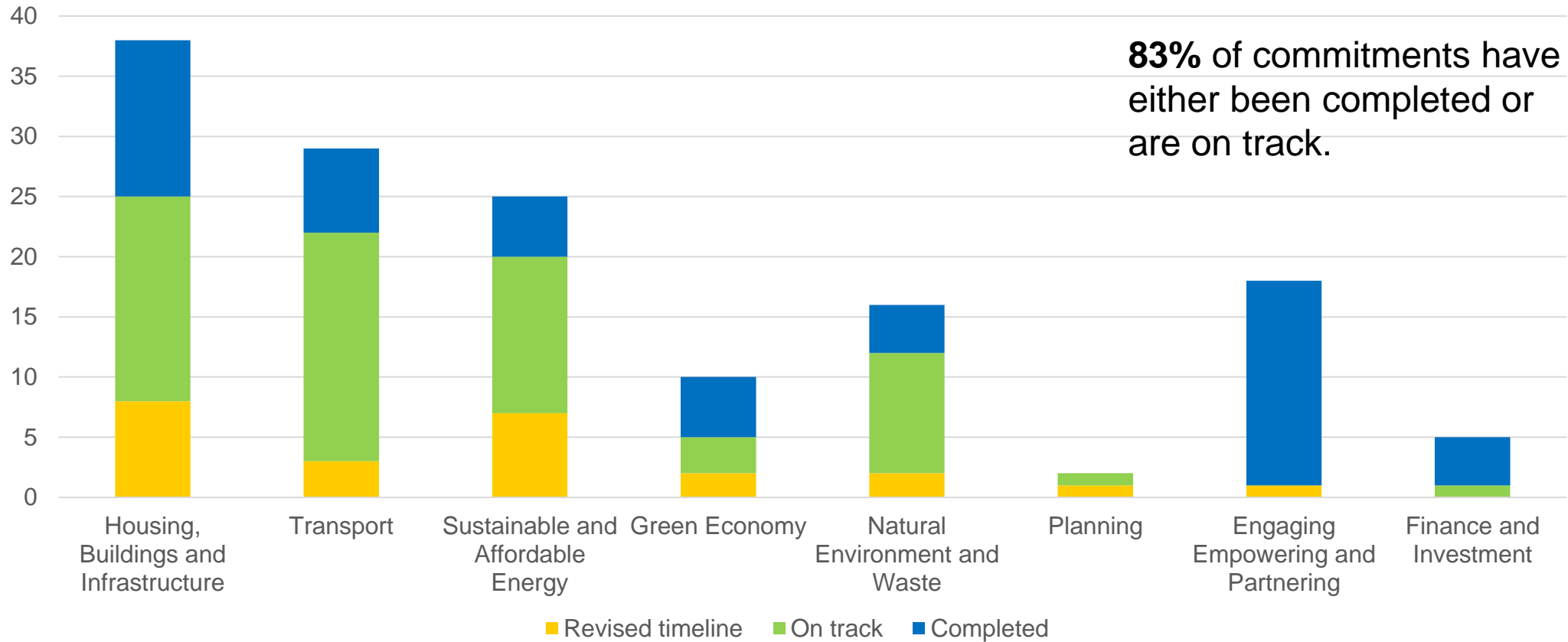
- Delivered our 'Let's Talk about a Greener Future' festival in October 2021, which involved around 100 council and community-led events over the two weeks prior to COP26
- Environment and Regeneration Scrutiny Committee held their public event on the climate emergency in March 2022 and Anchor Institutions Network met for the first time in February 2022 to agree priorities for action and next steps
- Launched a new Greener Together microsite and pledge tool for residents, businesses and schools

Page 39

## WS8: Finance and investment

- London's first Community Municipal Investment - Islington Greener Futures 2027 - launched October 2021, achieved our £1 million target in January 2022. We have spent £495,000 on the projects we committed to fund with Islington Greener Futures 2027.
- By 31 March 2022, the Islington Council's pension fund had decarbonised by 42.5%
- Islington's Carbon Offset Fund is still the biggest offset fund in London generating income of c. £1.5m p/a to help contribute to achieving NZC

# Overview of progress to March 2022



# Key next steps

## **WS1: Buildings, Housing, Commercial and Infrastructure**

- UCL to complete remaining studies for low-rise and street properties
- Complete feasibility studies for low carbon heating solutions at three pilot estates and where viable, establish a delivery programme.
- Deliver energy saving measures at the Waste Recycling Centre and New River College school and seek funding to deliver improvements to other schools and corporate buildings

## **WS2: Transport**

- Replace 100 council fleet vehicles with electric vehicles in 2022/23
- Continue the People Friendly Streets programme
- Deliver smart electric vehicle charging points at four council sites and another 100 charging points on street

## **WS3: Sustainable and Affordable Energy**

- Develop GreenSCIES New River Scheme
- Install solar PV at four council sites (Laycock and Ecology Centres, Downham Rd and Fairbridge Rd Depots)
- Deliver heat decarbonisation feasibility studies on 10 corporate buildings, including identifying their maximum solar power potential and how to electrify heat.

# Key next steps (continued)

## **WS4: Green Economy**

- Develop small business directory to support anchor institutions and larger businesses to purchase locally and support businesses to secure contracts
- Develop a communications strategy to raise awareness of opportunities offered by green skills

## **WS5: Natural Environment, Waste Reduction and Recycling**

Page 42

- Begin developing Green Infrastructure Strategy
- Deliver the first year of the Islington Greener Together programme initiatives
- Develop and approve second Reduction and Recycling Plan 2023-25

## **WS6: Planning**

- Subject to approval, the new Local Plan can proceed to formal adoption by the Full Council
- Appointment of officer to take forward production of Supplementary Planning Document

# Key next steps (continued)

## **WS7: Engaging, Empowering and Partnering**

- Programme of community engagement events being planned for summer 2022 to provide local people with opportunity for greater involvement in shaping the programme
- Behaviour change programme being developed to pilot new initiatives both for the council's own staff and across the borough, in collaboration with other London Boroughs.

## **WS8: Finance and investment**

- Page 43
- Developing Islington's financial strategy (focused on financial and environmental benefits), working with colleagues from other workstreams and external partners to scope out the cost of achieving net zero, the funding routes already available and the alternative funding mechanisms needed to deliver at the scale required.

# Progress reporting in 2022/23

## Adapting our approach

- Full review of all action plans is underway to ensure they are up-to-date and still accurate/relevant to future delivery.
- Going forward, reporting in 2022-23 will be based on the updated action plans.
- Establishing and monitoring Key Performance Indicators for each workstream alongside quarterly updates on progress
- Establishing carbon monitoring – aligning with work on this at London Councils level – aspiration is to quantify carbon impact of activities
- Establishing costs – developing our understanding of the cost of the Net Zero Carbon programme
- By addressing the above over the coming months, we aim to support future planning and prioritisation of the programme going forwards



# Islington's Vision 2030 Ambition

## “Creating a clean and green Islington in response to the Climate Emergency.”

Islington Council declared a climate emergency on 27 June 2019, committing the council to working towards **making Islington net zero carbon by 2030**.

Carbon emissions for Islington as a borough were 679,589 tonnes, representing a reduction of 42% since 2005 (BEIS – 2018)

However, the council has direct **control over only 4%** of the carbon emissions, with indirect responsibility for another 5% as a landlord to c. 25,000 properties

**A 10-year Net Zero Carbon Strategy**, with action plans, was adopted by Executive in November 2020 to tackle the climate emergency. In “Vision 2030: Building a Net Zero Carbon Islington by 2030” the council made a wide range of commitments.

In recognition of the scale of the challenge, the proposed commitments and actions to be delivered by the programme were categorised as:

- **What we can commit to** immediately and actions we will take
- **What we see as potential commitments** but requires further investigation before committing to
- **What we need from others** for the borough to achieve net zero, including funding, powers and legislation

In March 2022, the council published its Summary Annual Review detailing progress on the delivery of Vision 2030: Building a Net Zero Islington by 2030. The following pages summarise our progress so far in delivering each of the commitments we set out in the Vision 2030 Strategy. The strategy was written at a point in time and we anticipate that it will need continuous review as we go forward, tackling

challenges we encounter on the way, learning lessons and identifying new or alternative approaches as our technology and our knowledge and understanding of the problems and potential solutions develops.

## Progress in 2021/22

### Governance

Vision 2030 recognised the importance of establishing a cross-departmental governance structure that extended across the organisation. The key elements of that structure have been established in our first year.

- Monthly Net Zero Carbon Steering Board was established in April 2021
- Quarterly Net Zero Carbon Executive Board was established in May 2021
- Environment and Regeneration Scrutiny Committee: Receive quarterly performance updates from the boards, available on the council's website, detailing our progress against the published commitments in Vision 2030. Each Scrutiny Committee meeting has also included a Scrutiny Review dedicated to different element of the Net Zero Carbon programme.

### Net Zero Carbon Programme Team

Over the course of 2021 the council allocated the necessary funds to establish a dedicated Net Zero Carbon (NZC) Programme Team. We have appointed a Head of Net Zero Carbon Programme, who once the full team has been recruited, will be supported by three Strategic Business Managers (each working on a number of workstreams) and a Programme Support Officer. This team is establishing and working with Workstream Delivery Teams for each of the Vision 2030 priorities, to strengthen monitoring and reporting of progress and support the development our Islington's strategic approach to tackling climate change going forwards. Workstream 1 has been established as a delivery team since summer 2021, with work to formalise the delivery teams for the other workstreams starting at the end of 2021 as the NZC Programme Team became established.

Workstreams have already been delivering some of the commitments in the action plans, as set out in the coming pages.

### London-wide partnerships

- Working closely with other local authorities and regional bodies through the London Environment Directors' Network and London Councils.

- One of the lead boroughs for the London Council’s Climate Change programme – leading the developing and delivery of the Renewable Power for London workstream.

### Next steps

- Review our governance arrangements to ensure they are effective and provide transparency.
- Explore how we can support new community-led mechanisms for engaging residents and groups on delivery of Vision 2030, to give local people greater oversight of the programme.
- Review and refining the commitments as we learn and understand more.
- Develop a Climate Adaptation and Mitigation strategy.

## Finance and Investment

We will work closely with our partners, in the borough, London and at a national level to identify and maximise funding sources, advocating for adequate and sustained funding from central government. We will also look to innovative green financing mechanisms to provide value for money in the investments we make in the net zero carbon initiative.

What we said in Vision 2030	What we have achieved since Vision 2030 (2021/22)	Next steps
Develop fully costed business case(s) for the net zero carbon strategy, considered as part of the council’s Medium Term Financial Strategy each year	<ul style="list-style-type: none"> <li>• The latest capital programme was considered by Council on 3 March 2022 which includes £46m of investment in Net Zero Carbon including additional investment in GreenSCIES + Retrofitting (£22m, subject to grants).</li> </ul>	<ul style="list-style-type: none"> <li>• Support identification and monitoring of emissions by Workstream and establish total cost of delivering a Net Zero Carbon borough.</li> <li>• Co-ordinate new business cases and support delivery of current approved capital and revenue programme agreed in March 2022.</li> </ul>

<p>Consider the most cost effective way for financing Islington's Net Zero Carbon Strategy.</p>	<ul style="list-style-type: none"> <li>Appointed a Funding and Finance Officer in July 2021 to monitor and co-ordinate funding bids and support applications. Finance is actively monitoring 20+ funding opportunities with Workstreams and SBMs.</li> <li>Launched Islington's first Community Municipal Investment in October 2021, with the £1million target successfully raised by the closing date in January 2022. We have already spent £495,000 on the projects we committed to fund with Islington Greener Futures 2027.</li> </ul>	<ul style="list-style-type: none"> <li>Develop funding opportunities database with Workstreams and continue to collaborate on policy and with partners.</li> <li>Continue to explore both Green Finance opportunities eg: UKIB and CMLs and Private Finance eg: JV and ESCOs.</li> <li>Develop financial strategies for Buildings Workstream (retrofit) and for S106 (Carbon Offset Fund) and CIL contributions.</li> </ul>
<p>Reduce the carbon emissions from the wider aspects of the council's investments. By 2022 we will reduce the current and future carbon exposure of our pension fund by 50% and 75% respectively compared to when it was measured in 2016 and also invest 15% of the fund in green opportunities. We will also continually review council investments and move investments to low carbon, renewable and carbon offset where suitable products exist and it is consistent with our fiduciary duty.</p>	<ul style="list-style-type: none"> <li>By 31 March 2022, the Islington Council's pension fund had decarbonised by 42.5%. While this falls just short of the target to decarbonise current exposure by 50% by 31 March 2022, we have exceeded our target to decarbonise future exposure by 75%, having achieved 78.9%.</li> <li>Updates are published annually</li> </ul>	<ul style="list-style-type: none"> <li>Continued work to improve the reporting on the pension fund with additional focus on ESG and potential improvements.</li> </ul>
<p>Secure funding for innovation projects:</p> <ul style="list-style-type: none"> <li>Seek funding for skills development programmes for young people and newly unemployed (2020-2025) so that local residents are benefiting from such programmes (e.g. green retrofitting)</li> </ul>	<ul style="list-style-type: none"> <li>Limited progress has been made in 2021/22 however a number of new actions are proposed for 2022/23.</li> </ul>	<ul style="list-style-type: none"> <li>Support development of a new fundraising/sponsorship strategy with Green Economy Workstream and investigate alternative ownership models within Islington e.g.: co-ops.</li> </ul>

<ul style="list-style-type: none"><li>• Seek funding to support formation of alternative ownership models such as mutual and co-operatives, aligned with the goals of rapid decarbonisation, such as solar panel installation, regenerative agriculture, urban community gardens and circular economy initiatives (2020-2025)</li><li>• Increase sponsorship from institutions to assist Islington to fund the measures needed to meet its net zero carbon targets, and to support the development of accessible investment schemes that will help green businesses increase the use and impact of their innovations (2020-2025)</li></ul>		
--	--	--

# Engaging, Empowering and Partnering Others

We will work closely with residents and local businesses and community groups to enable and encourage them to help our borough achieve net zero. This will include working with stakeholders to address their emissions related to aviation and consumption, even though these two sectors are not included in the overall emissions figures.

What we said in Vision 2030	What we have achieved since Vision 2030 (2021/22)	Next steps
<p>Create a communications plan to engage with residents, local businesses, stakeholders, partners and staff on the reasons for declaring a climate emergency.</p> <ul style="list-style-type: none"> <li>• Agree initial comms plan (April 2021) subject to requirements being provided by other workstreams.</li> </ul>	<ul style="list-style-type: none"> <li>• Completed initial communications plan for April 2021-January 2022.</li> <li>• Developed engagement and communications strategy over summer 2021, approved in September 2021.</li> <li>• January-April 2022 involved engagement and communications opportunities thematically packaged to gain maximum traction, aligned to overarching corporate campaign, Islington Together, to ensure a holistic approach with wider council priorities.</li> </ul>	<ul style="list-style-type: none"> <li>• We will now work with each programme workstream to develop a communications plan for the next 18 months.</li> <li>• Implement elements of the engagement and communications strategy not already in place, such as installing a community forum to help shape our programme planning processes.</li> </ul>
<p>Work with staff, unions and councillors to deliver behaviour change at the council</p>	<ul style="list-style-type: none"> <li>• Identified 'Together Greener Champions' who will work within teams across the council to help drive behaviour change.</li> <li>• The ability to affect behaviour change amongst the staff body was somewhat impacted by the pandemic and many colleagues working from home.</li> </ul>	<ul style="list-style-type: none"> <li>• Now that we are back in the office, we are reigniting our internal behaviour change plans, amending as appropriate to reflect our new working practices.</li> </ul>
<p>Raise awareness amongst our public sector partners, e.g. the NHS, the Metropolitan Police and higher and further education institutions, the</p>	<ul style="list-style-type: none"> <li>• Engaged with public sector partners as part of their initial engagement strategy work above. Developed an Anchor Institutions network, which met formally in</li> </ul>	<ul style="list-style-type: none"> <li>• The Anchor Institutions Network are developing themed working groups to identify and take forward actions – this includes</li> </ul>

<p>importance of this priority and support them to look at their own operations</p>	<p>February 2022 to discuss commitments and opportunities for collaboration.</p>	<p>establishing a working group on Net Zero Carbon.</p>
<p>Define, create and operate a council net zero carbon programme, including the engagement of lead and ward councillors</p>	<ul style="list-style-type: none"> <li>• Set up the governance model, establishing the NZC Executive Board and Steering Board in Spring 2021. Environment Scrutiny committee which has conducted a detailed review of individual workstreams on a monthly basis. Quarterly progress reports are also presented here.</li> <li>• Established Workstream 1 delivery team in the summer</li> <li>• Established the NZC programme team in October 2021. Currently establishing workstream delivery teams for the remaining workstreams. An engagement working group operated throughout the year, working towards planning and delivering the Greener Together Festival at the end of October.</li> </ul>	<ul style="list-style-type: none"> <li>• The governance model will be reviewed to ensure it is efficient and transparent going forwards. Work is underway to review and update all workstream action plans for detailed review and approval to clarify the next actions required.</li> <li>•</li> </ul>
<p>Ensure that our residents' and local businesses' interests are firmly represented in the Net Zero Carbon Working Group's action plans.</p>	<ul style="list-style-type: none"> <li>• The Net Zero Carbon Working Group met fortnightly through 2021 and guided the development of our energy hub (now known as our environment microsite), our climate festival and climate pledge tool.</li> <li>• The group was also instrumental in the facilitation of three workshops in summer 2021 where we asked local businesses, landlords and residents associations and community groups on how we could best communicate with those who live and work in the borough to reduce carbon outputs.</li> </ul>	<ul style="list-style-type: none"> <li>• Following the inception of Programme Workstream meetings, it was decided that those meetings were the better forum for future engagement and communications plans and the working group was set aside.</li> </ul>

<p>Hold a Net Zero Carbon themed Citizens' Assembly</p>	<ul style="list-style-type: none"> <li>• Agreed approach and scope (July), rescoped into Festival which was branded and launched across council channels with over 100 events in total with the Gazette on board as media partner. UK 100 and Living Streets spoke at launch event.</li> </ul>	<ul style="list-style-type: none"> <li>• We will now move forward with a comms plans bespoke to each workstream as detailed above.</li> </ul>
<p>Set up an Energy Hub where residents, local businesses and third sector organisations can access information, advice and services provided by the council related to energy and going zero carbon</p>	<ul style="list-style-type: none"> <li>• Developed the Greener Together microsite – due to Christmas it was launched in January 2022 providing a one stop location for information and advice on being more sustainable.</li> </ul>	<ul style="list-style-type: none"> <li>• Continue to make concerted pushes on the microsite towards residents and organisations as intervals throughout the year.</li> <li>• Signpost to the microsite on related campaign points as necessary.</li> <li>• Review the site on a quarterly basis to ensure it is up to date and contains a complete suite of necessary information.</li> </ul>
<p>Investigate how we can work with circular economy organisations to support resident engagement in zero waste initiatives, including promoting a sharing society. We will also pilot a 'Library of Things' with Bright Sparks.</p>	<ul style="list-style-type: none"> <li>• Launched the Library of Things in October 2021.</li> <li>• Launched a support programme for businesses to encourage adoption of circular economy principles in early 2022.</li> <li>• Published Circular Economy Action Plan in January 2022.</li> <li>•</li> </ul>	<ul style="list-style-type: none"> <li>• Implement the Circular Economy Action Plan, incorporating the actions within the Net Zero Carbon programme and attributing actions to workstreams as appropriate</li> </ul>
<p>Set up a web portal for residents to make their own climate emergency declarations:</p>	<ul style="list-style-type: none"> <li>• Launched the Greener Together microsite and pledge tool on 20 January (to avoid Christmas).</li> </ul>	<ul style="list-style-type: none"> <li>• Ongoing publicising of the pledge tool with regular updates for those who make a pledge (3 month and 6 month intervals). Follow up to evaluate the efficacy of the tool in stimulating behaviour change.</li> </ul>
<p>Investigate setting up residential and business audit schemes to advise residents and local businesses on what they can do towards the net zero goal</p>	<ul style="list-style-type: none"> <li>• Launched business audit scheme to advise businesses on reducing carbon emissions in September</li> </ul>	<ul style="list-style-type: none"> <li>• Continue to promote the Energy Advice/SHINE/Green Doctor service for residents.</li> </ul>



	<ul style="list-style-type: none"> <li>Residents can continue to access the Energy Advice service from the council.</li> </ul>	<ul style="list-style-type: none"> <li>Continue to promote the business audit scheme to encourage further takeup.</li> </ul>
Explore pilot project with ClimateView and LEDNet to map and develop specific carbon actions and targets	<ul style="list-style-type: none"> <li>Commenced a pilot project to explore the digital tool offered by ClimateView. It did not offer the solution we were hoping for and we are exploring alternatives</li> </ul>	<ul style="list-style-type: none"> <li>Produce an options appraisal of carbon monitoring approaches to establish the best mechanism for establishing a robust monitoring programme and as part of this will be seeking to set interim targets across the programme.</li> </ul>
Define, create and operate a London-wide approach and proposition to deliver net zero carbon and reduce climate change.	<ul style="list-style-type: none"> <li>Developed and submitted a two-year action plan for the Renewable Power for London workstream to London Councils in December as part of the London Council's Climate Change Programme. Islington is the lead borough for this workstream.</li> </ul>	<ul style="list-style-type: none"> <li>Ongoing collaboration in partnership with councils across London, including regular meetings with working groups scheduled to take forward the action plan.</li> </ul>
<p>Influencing:</p> <ul style="list-style-type: none"> <li>Investigate how we can employ innovative financial instruments such as community municipal bonds to fund onsite generation schemes</li> <li>Advocate for financial measures that can reduce the cost of climate action, e.g. VAT reduction on energy efficiency measures</li> <li>Partner with our suppliers in order to generate social value by focusing on the energy consumption of our supply chains.</li> </ul>	<ul style="list-style-type: none"> <li>Researched and delivered our Community Municipal Bond, which raised £1m for a series of projects within the NZC programme.</li> <li>We actively participate in London Councils networks to agree areas for collaboration and influencing of national policy</li> </ul>	<ul style="list-style-type: none"> <li>Continue to work with London Councils to influence national policy.</li> <li>Work with our Anchor Institutions Network over the coming year to collectively develop an action plan for working with our supply chain.</li> </ul>

# Priority 1: Buildings, Housing and Infrastructure

Improve the energy efficiency and reduce the level of carbon emissions of all buildings and infrastructure:

We will continue our work on the insulation of properties and seek ways of converting heating systems away from gas where possible. In doing so we will work with borough partners such as schools and colleges, universities and the NHS to support them to reduce carbon emissions from their estates.

What we said in Vision 2030	What we have achieved since Vision 2030	Next steps
<b>Housing</b>		
<b>Council owned</b>		
Prepare feasibility studies for minimising the carbon footprint of our larger housing estates	<ul style="list-style-type: none"> <li>• Appointed University College London (UCL) to produce high level assessment of the different options and retrofit measures across our estates</li> <li>• Completed detailed studies of different options and investment priorities for our high-rise buildings</li> </ul>	<ul style="list-style-type: none"> <li>• UCL to complete remaining studies for medium-rise, low-rise and street properties</li> <li>• Review Housing Investment Plan and capital investment budget to reflect investment priorities and gap in the investment need for delivery.</li> </ul>
Implement a large-scale trial of low carbon heating solution at a pilot estate	<ul style="list-style-type: none"> <li>• Three pilot estates identified and selected – Harry Weston, Bevin Court, and Newbury House</li> <li>• Process underway to appoint consultants to carry out feasibility studies and complete site visits</li> <li>• Ongoing engagement and consultation with tenant groups to agree consultant scope and where appropriate, the preferred solutions</li> </ul>	<ul style="list-style-type: none"> <li>• Complete feasibility studies at the three pilot estates and where viable, establish a delivery programme.</li> <li>• Progress a programme of works to implement retrofit measures across street-based properties, including measures for 32 properties funded by the <a href="#">Social Housing Decarbonisation Fund</a>.</li> </ul>

Maximise the efficiency of council housing communal equipment	<ul style="list-style-type: none"> <li>UCL reviews and feasibility studies at the pilot estates will inform the investment priorities.</li> </ul>	
Restart our hard-to-insulate programme on the council's remaining properties that still require such insulation	<ul style="list-style-type: none"> <li>Secured £400,000 through Social Housing Decarbonisation Fund (SHDF) to contribute to the cost of raising 32 street-based properties to an EPC category rating of C.</li> <li>Secured <a href="#">Green Homes Grant Local Authority Delivery</a> scheme funding and carried out works at 53 properties.</li> </ul>	<ul style="list-style-type: none"> <li>Mobilise a programme of works to implement low carbon heating solutions at Harvist Estate including design and planning, resident/tenant engagement and securing funding.</li> </ul>
Consider using new technology to improve the way in which we target energy efficiency investment across our stock	<ul style="list-style-type: none"> <li>Parity data software commissioned to hold more accurate data on the energy performance of the council's housing stock.</li> </ul>	<ul style="list-style-type: none"> <li>Use Parity software to inform and scope future investment programmes whilst maximising bidding opportunities.</li> <li>Identify properties for future grant funding applications e.g. Social Housing Decarbonisation Fund.</li> </ul>
<b>Private landlords and tenants</b>		
Work with landlords of privately-rented domestic properties, through our HMO licensing function, to ensure that their properties are compliant with the Minimum Energy Efficiency Standards (MEES) when they grant a new tenancy to new or existing tenants, including encouraging landlords to upload a copy of their EPC when applying for a licence.	<ul style="list-style-type: none"> <li>EPC compliance process delivered through the HMO licensing scheme</li> <li>Action plan developed to tackle non-compliant properties through public campaigns and/or educational action with Private Rented Sector partners</li> </ul>	<ul style="list-style-type: none"> <li>Audience segmentation / stakeholder mapping to be carried out along with a review of the Islington Together microsite (opportunities for more content) to develop a package of support and engagement plan (for landlords and owner occupiers)</li> <li>Develop referral mechanisms to accredited installers of energy efficiency measures to support homeowners to implement measures for their homes</li> </ul>

<p>Proactively enforce the Minimum Energy Efficiency Standards for all other privately rented housing through our Trading Standards team.</p>	<ul style="list-style-type: none"> <li>• Pilot project completed, with learning and evidence now being used by Trading Standards Service.</li> </ul>	
<p>Create or promote a “Retrofit Together” scheme that helps simplify the retrofit market and reduce costs for property owners by creating a one-stop-shop for energy efficiency measures with pre-procured contractors.</p>	<ul style="list-style-type: none"> <li>• Promoted low carbon home renovation service, Ecofurb, through the <a href="#">council’s Together Greener website</a> and launched the <a href="#">Solar Together Islington scheme</a>.</li> </ul>	
<p><b>New build</b></p>		
<p>Deliver new housing through the council's new build programme to meet the net zero carbon target whilst improving quality, liveability, thermal comfort, maintainability, fuel poverty, and end user experience.</p>	<ul style="list-style-type: none"> <li>• Completed Decarbonising New Homes (DNH) Strategy and Implementation Plan including a comprehensive review of how our new build programme can meet the net zero carbon target whilst improving quality, liveability, thermal comfort, maintainability, fuel poverty, and end user experience. Development of technical specifications also underway.</li> <li>• Selected pilot scheme (Vorley Road) to test application of the new DNH Strategy and feed lessons learned into technical specifications.</li> <li>• All new homes without planning consent as of September 2020 now progressed with alternatives to heating</li> </ul>	<ul style="list-style-type: none"> <li>• Begin construction of pilot project of a decarbonised new home at Vorley Road</li> <li>• Ongoing work and research to extend the strategy to include the public realm</li> <li>• Establish systems to ensure that occupants in new housing understand how to operate systems that will be unfamiliar to them and to promote/encourage greater energy efficiency through occupant choice</li> <li>• Implement a post-construction building performance data management strategy to enable ongoing learning about "in-use" building performance</li> </ul>

	<p>and hot water systems fuelled directly from the gas grid</p> <ul style="list-style-type: none"> <li>• Development and implementation of a post-construction building performance data management strategy to enable ongoing learning about "in-use" building performance underway</li> <li>• Introduced new measures to ensure that development plans, wherever possible, make a positive contribution to the protection, enhancement, creation, and management of biodiversity (Tree Mitigation Policy and early work on Landscape Design guidance also underway)</li> <li>• Developed a robust design compliance process to ensure zero carbon strategy is being incorporated throughout all design and construction stages across the programme</li> </ul>	
<p><b>Buildings and infrastructure</b></p>		
<p><b>Council owned</b></p>		
<p>Begin replacing gas boilers in the council's corporate properties with electrical heating or connections to heat networks and improve energy efficiency through insulation and lighting replacements.</p>	<p>Council corporate buildings:</p> <ul style="list-style-type: none"> <li>• Secured funding that will be used to carry out feasibility studies for replacing gas boilers at least 50 council owned corporate buildings</li> </ul> <p>Schools:</p> <ul style="list-style-type: none"> <li>• Secured funding to implement decarbonisation measures at New</li> </ul>	<ul style="list-style-type: none"> <li>• Complete feasibility studies for at least 50 council owned corporate buildings and 20 schools. Get approval on prioritisation of the order in which work would be carried out across the buildings in scope</li> <li>• Apply for funding to implement measures identified</li> </ul>

	<p>River College school. The work at this pilot site includes window replacement, introduction of mechanical ventilation and heat recovery for WC and classrooms, Buildings Management Systems, Heat metering and installation of a ground source heat pump</p> <ul style="list-style-type: none"> <li>Secured funding and completed feasibility studies for a further 20 schools in March 2022</li> </ul>	<ul style="list-style-type: none"> <li>Establish a delivery programme and secure resources to carry out agreed works</li> <li>Complete works to implement energy saving measures into New River College school – a pilot for future work carried out at other schools in the Borough</li> </ul>
<b>Non-council</b>		
<p>Support private property owners by developing a loan scheme that allows property owners easier access to finance for energy efficiency improvements</p>	<ul style="list-style-type: none"> <li>Completed scoping document to commission a feasibility study that will focus on the requirements, benefits, cost, and risks of developing a loan scheme that will make it easier for property owners to implement higher cost measures that eliminate carbon emissions and help reduce energy bills</li> <li><a href="#">Business audit scheme</a> launched to provide tailored information for businesses/third sector organisations on how they can reduce their carbon footprints</li> </ul>	<ul style="list-style-type: none"> <li>Secure funding to commission a feasibility study that will focus on the requirements, benefits, cost, and risks of developing a loan scheme</li> <li>Develop our approach and guidelines for expanding the use of solar energy at residential and non-residential sites across the borough</li> </ul>
<b>Lobbying and influencing</b>		
<p>Work with London Boroughs, London Councils and the GLA to seek:</p>	<ul style="list-style-type: none"> <li>Participated in and contributed to the London Council's Climate Change Programme workstream "Retrofit London"</li> </ul>	<ul style="list-style-type: none"> <li>Continue working with London Boroughs, London Councils, the GLA.</li> </ul>

<ul style="list-style-type: none"><li>• Government to fund a major insulation and zero carbon heating retrofit programme.</li><li>• Certainty (including dates) from Government that gas boilers will be phased out in new build – both commercial and residential – and that significant grant funding for low carbon heating will be made available.</li><li>• Government to commit to the Minimum Energy Efficiency Standards (MEES) requirements for all residential properties rising to B by 2030 and make assistance available to support landlords to do so.</li><li>• London-wide landlord licensing to enable MEES enforcement</li><li>• Government to bring forward the target date of a decarbonised electricity grid from 2050 to 2030.</li></ul>	<ul style="list-style-type: none"><li>• Ongoing influencing activity at senior level through London Environment Directors Network (LEDNet)</li><li>• Programme briefings and key asks issued to local politicians as part of campaigns around COP26</li></ul>	<ul style="list-style-type: none"><li>• Identify influencing opportunities for inclusion in emerging workstream engagement plan</li></ul>
--	---	---

## Priority 2: Transport

Reduce emissions in the borough from transport: Reduce vehicular emissions by encouraging walking, cycling and public transportation.

By working collaboratively, we will explore how to transform our streets, secure better, cleaner and more accessible public transport services for Islington and improve air quality for residents. We will also electrify our fleet and encourage residents and local businesses to do the same by ensuring the appropriate infrastructure is in place

What we said in Vision 2030	What we have achieved since Vision 2030	Next Steps
<b>Fleet replacement and reduction programme</b>		
Increase the number of electric vehicles within our fleet	<ul style="list-style-type: none"> <li>14% of the council fleet is electric at December 2021</li> </ul>	<ul style="list-style-type: none"> <li>Replace another 100 vehicles with electric vehicles by the end of 22/23</li> <li>50% of fleet electric (April 2025)</li> <li>100% of fleet electric (April 2030)</li> </ul>
Continue to reduce the number of vehicles in the council fleet by reviewing how services operate and staff travel, and providing alternative modes such as electric bikes.	<ul style="list-style-type: none"> <li>Started developing an approach to reduce the number of vehicles in the fleet.</li> </ul>	<ul style="list-style-type: none"> <li>Develop an approach for reducing the council fleet in 22/23, and implement the plan alongside the fleet electrification programme.</li> </ul>
Install charging infrastructure at council locations where vehicles are kept overnight.	<ul style="list-style-type: none"> <li>Completed Waste Recycling Centre (WRC) initial smart charger installation in December 2020</li> <li>By December 2021, 36 smart chargers had been installed at council sites at Laycock Street, the Town Hall, the WRC, Randalls Road and Pritchard Court.</li> </ul>	<ul style="list-style-type: none"> <li>Deliver Waste Recycling Centre (WRC) grid connection and substation and low voltage infrastructure installation (September 2022)</li> <li>Install charging infrastructure at council locations where vehicles are kept overnight (2025/26)</li> <li>Council sites to get smart electric vehicle charging points during 2022/23:               <ul style="list-style-type: none"> <li>Waste recycling centre</li> <li>Newington Barrow Way</li> <li>222 Upper Street</li> </ul> </li> </ul>



		<ul style="list-style-type: none"> <li>○ Fairbridge Road</li> </ul>
Enable Vehicle 2 Grid (V2G) at locations with parked vehicles, expanding on the Town Hall V2G trial	<ul style="list-style-type: none"> <li>• Trial of V2G connections at other locations with parked vehicles is underway</li> </ul>	<ul style="list-style-type: none"> <li>• Trial will be completed December 2022</li> <li>• Rollout plan agreed, subject to successful trial (2023/24)</li> </ul>
<b>Vehicle use reduction by residents and local businesses</b>		
Reduce the need for cars by making active travel (i.e. walking, cycling and public transport) the easiest and most enjoyable option	<ul style="list-style-type: none"> <li>• Delivered eight low-traffic neighbourhoods (LTNs) trials (plus a similar scheme at Mayton Street).</li> <li>• Public consultation on the first seven LTNs and Mayton Street scheme has been completed.</li> <li>• Clerkenwell Green LTN has been made permanent with blue badge exemption.</li> </ul>	<ul style="list-style-type: none"> <li>• Continue the People Friendly Streets programme, which will be a rolling programme to deliver liveable neighbourhoods across the borough, sensitive to each area's needs.</li> <li>• Liveable Neighbourhoods to be delivered during 2022 and 2023 <ul style="list-style-type: none"> <li>○ Barnsbury and St Mary's</li> <li>○ Mildmay</li> <li>○ Highbury New Park</li> <li>○ The Cally</li> </ul> </li> </ul>
	<p>Cycleways completed:</p> <ul style="list-style-type: none"> <li>• Green Lanes</li> <li>• Balls Pond Road</li> <li>• Cycleway 38 North - Highbury Fields to Finsbury Park</li> <li>• York Way</li> <li>• Cycleway 38 South – Holloway Road to Pentonville Road</li> </ul> <p>• Islington is supporting TfL as it leads on Cycleway 50, which is currently in the design phase.</p>	<ul style="list-style-type: none"> <li>• Develop proposals and deliver the Regent's Canal to Highgate cycleway (2024)</li> <li>• Carry out feasibility at Amwell Street to establish what further measures are needed in addition to the smaller measures that have already taken place (2022/23)</li> <li>• Deliver the full Old Street/Clerkenwell Road "Healthy Street Corridor" (walking, cycling, bus priority) (2023/24).</li> </ul>
Introduce a borough-wide lorry control scheme working towards banning lorries (HGVs) from driving through the borough on residential roads.	<ul style="list-style-type: none"> <li>• Low-traffic neighbourhoods and similar measures have been delivered in Islington that restrict traffic, including HGVs and LGVs, driving on local roads.</li> </ul>	<ul style="list-style-type: none"> <li>• Lorry control measures will be introduced through liveable neighbourhoods and at suitable locations as part public realm</li> </ul>

<p>Enhance measures to enforce the existing 7.5t lorry ban and consider an expansion of this ban to include all lorries of 3.5t or higher.</p>		<p>measures packages to improve each area in Islington.</p>
<p>Deliver 'School Streets' or similar interventions where possible at all primary schools in the borough by 2022, restricting through traffic at school gates at the start and end of the school day, and start to look at secondary schools</p>	<ul style="list-style-type: none"> <li>• 35 School Streets established of which four are in consultation for final decision in summer 2022.</li> <li>• Two main road school streets environmental improvements were delivered in April 2022 at Ambler Primary school on Blackstock Road and Canonbury Road primary.</li> </ul>	<ul style="list-style-type: none"> <li>• Deliver third and final phase of school streets not on main roads, where feasible (2023/24).</li> <li>• Deliver alternative "School Street" measures on all primary schools on main roads where feasible (2028/29) <ul style="list-style-type: none"> <li>○ 2 per year until 28/29, 3 schools during 22/23</li> </ul> </li> <li>• Explore next steps for 'School Streets' or environmental improvements at secondary schools 2022/23</li> </ul>
<p>Develop and deliver an Accessibility Plan and a Walking and Cycling Action Plan by 2025 to transform Islington into an exemplary borough for walking, cycling and accessibility, including the reallocation of road space for these modes.</p>	<ul style="list-style-type: none"> <li>• Drafting and benchmarking of the walking and cycling plan underway.</li> <li>• In 2021, the Council committed to deliver a people-friendly pavements programme as part of the people-friendly streets (liveable and low-traffic neighbourhoods) programme. This will be form part of the Accessibility Action plan.</li> </ul>	<ul style="list-style-type: none"> <li>• Develop walking and cycling action plan (Q1 2023/24)</li> <li>• Develop accessibility action plan incorporating People friendly pavements programme (Q1 2023/24)</li> <li>• Implement the walking and cycling and accessibility action plans (2030)</li> </ul>

Develop a parking strategy by 2022	<ul style="list-style-type: none"> <li>Introduced emissions-based parking charges for petrol and petrol hybrid vehicles – an addition to the existing surcharge of £5 per hour for all diesel vehicles paying for short stay parking, established in 2018.</li> <li>In April 2021 petrol and petrol hybrid vehicles also became subject to a surcharge on short stay parking, based on the CO2 emissions of the vehicle, and electric vehicles could park at a reduced rate of 20p.</li> </ul>	<ul style="list-style-type: none"> <li>Develop and adopt a parking strategy (Q1 2024/25)</li> </ul> <p>During 2022:</p> <ul style="list-style-type: none"> <li>Publish an updated parking statement</li> <li>Adopt reviewed permit policies</li> <li>Release a statement of intent on a Parking Strategy for Islington</li> </ul>
Investigate phasing out resident and business parking permits for diesel and petrol vehicles by 2030 and review our charges.		<ul style="list-style-type: none"> <li>To be carried out as part of the process to develop a parking strategy.</li> </ul>
Ensure new developments are car-free or have restricted on-site parking and access to controlled parking zones, and have adequate cycle facilities.	<ul style="list-style-type: none"> <li>272 car-free units gained planning permission in 2021, bringing the total up to more than 16,000 properties in Islington.</li> </ul>	<ul style="list-style-type: none"> <li>Continue to apply policy to new development</li> </ul>
<b>Rollout of public electric vehicle charging infrastructure</b>		
Ensure public electric vehicle infrastructure is powered by renewable sources.	<ul style="list-style-type: none"> <li>All publicly available electric vehicle charging points powered by renewable sources since 2021.</li> </ul>	<ul style="list-style-type: none"> <li>Complete</li> </ul>
Ensure the borough invests in electric vehicle charging infrastructure, including lamp column and rapid chargers, carefully locating chargers to avoid pedestrian access issues	<ul style="list-style-type: none"> <li>336 electric vehicle charging points delivered by the end of March 2022, 84% of our target for 2022.</li> </ul>	<ul style="list-style-type: none"> <li>Achieve a total of 500 on street charging points by the end of 2022/23.</li> </ul>

Support and promote electric car club schemes and carpooling initiatives	<ul style="list-style-type: none"> <li>We have continued to work with our car club partners to expand car club provision in the borough and increase the number of electric vehicles in the fleet.</li> </ul>	<ul style="list-style-type: none"> <li>Continue to support and promote electric car club initiatives</li> </ul>
Encourage the use of electric taxis by ensuring Islington has sufficient on-street rapid chargers for taxi drivers	<ul style="list-style-type: none"> <li>There are 19 rapid chargers in Islington, eight of which have been installed in partnership with TfL on the TfL road network.</li> <li>Three of the charging points are dedicated for use by taxis, including two on the Transport for London's Road Network.</li> </ul>	<ul style="list-style-type: none"> <li>Continue to work with TfL to facilitate the rollout of charging infrastructure on their road network</li> </ul>
Encourage local businesses to switch to cargo bikes or zero emissions vehicles.	<ul style="list-style-type: none"> <li>Up to £2000 workplace travel grants available for Islington businesses to purchase a cargo bike.</li> <li>Try Before You Bike scheme offers an affordable bike and accessories purchase scheme with free cycle skills sessions.</li> </ul>	<ul style="list-style-type: none"> <li>Run one-year cargo bike trial with two local businesses (commenced April 2022).</li> <li>Encourage and support businesses and residents to use microfreight options (bikes, cargo bikes and trolleys)</li> </ul>
<b>Discourage fossil fuel based plant usage</b>		
Replace grounds maintenance equipment, e.g. the council has been trialling electric blowers and strimmers	<ul style="list-style-type: none"> <li>20% of our grounds maintenance equipment is electric</li> </ul>	<ul style="list-style-type: none"> <li>Continue to replace grounds maintenance equipment (2030)</li> </ul>

<p>Replace diesel generators with emissions-free alternatives such as battery packs or fuel cells in our non-road mobile machinery (NRMM)</p> <p><i>[NRMM – this means mobile machines and transportable industrial equipment or vehicles which are fitted with an internal combustion engine and not intended for transporting goods or passengers on roads (e.g. hedge trimmers, generators, bulldozers, forklifts, etc)]</i></p>	<ul style="list-style-type: none"> <li>Supported the NRMM monitoring and compliance project for large construction sites.</li> </ul>	<ul style="list-style-type: none"> <li>Do an audit on NRMM</li> <li>Support Council teams that use fossil fuelled NRMM plant machinery to reduce use and switch to emissions free alternatives</li> <li>Facilitate and explore the best ways to encourage businesses and residents to reduce non-council fossil-fuel based NRMM plant machinery use and switch to emissions free alternatives.</li> </ul>
<p>Implement the UK's first Eco Zone at the Regent's Canal to provide cleaner power to canal boats that use diesel engines and wood stoves, and build on its success to provide these benefits in other areas with poor air quality.</p>	<ul style="list-style-type: none"> <li>Installed electric charging bollards across all Regent's Canal moorings in Islington</li> <li>The trial started in Q3 2021/22.</li> </ul>	<ul style="list-style-type: none"> <li>Two-year trial of electric bollards ongoing until 2023/24</li> <li>Investigate a ban on burning solid fuel following the trial.</li> <li>Review monitoring and assessment of the trial to establish future operation, and share findings of the trial with local authorities.</li> </ul>

## Priority 3: Sustainable and Affordable Energy Generation and Supply

Increase local generation of renewable heat and electricity, increase the uptake of affordable and renewable energy tariffs and mitigate fuel poverty.

We will look to increase the use of smart, zero carbon district heating and solar power generation in the borough, considering the whole energy system. We will also continue to support residents in fuel poverty by helping them access cheaper tariffs and the benefits they are entitled to.

What we said in Vision 2030	What we have achieved since Vision 2030 (2021/22)	Next Steps
<b>Energy Networks</b>		
Complete detailed engineering design of two smart energy networks as part of the GreenSCIES project	<ul style="list-style-type: none"> <li>The Innovate UK supported GreenSCIES2 partnership, which includes Islington Council, concluded at the end of May 2022, delivering a substantial set of engineering and architectural design work, financial modelling, and community engagement resources for handover to Islington Council</li> </ul>	<ul style="list-style-type: none"> <li>Develop GreenSCIES New River Scheme business case and detailed design Q3 2023/24</li> <li>Construct GreenSCIES Network (2025)</li> </ul>
Identify potential heat sources (including natural heat such as groundwater or waste heat from sources such as data centres, the London Underground or electrical substations) and conduct detailed feasibility studies on zero carbon smart energy networks using funding from the government's Heat Networks Delivery Unit	<ul style="list-style-type: none"> <li>Started a feasibility study on a new energy centre in the Bunhill area, considering ground source and sewer source heat pumps as part of the Finsbury Leisure Centre site redevelopment.</li> </ul>	<ul style="list-style-type: none"> <li>Produce a new decentralised energy masterplan (2023/24) The masterplan will cover:               <ul style="list-style-type: none"> <li>Location of waste heat opportunities, including opportunities for using council-owned parks for ground source heat pump arrays.</li> <li>Heat demand mapping, including identifying council sites (both non-domestic and communally heated council estates and blocs) that would provide a suitable basis for a new network.</li> </ul> </li> </ul>
Connect our communally-heated buildings to district heat networks where possible.	<ul style="list-style-type: none"> <li>Scoped potential connections as part of the GreenSCIES network</li> </ul>	

<p>Look at opportunities for ground source heat pumps in parks &amp; housing estates</p>	<ul style="list-style-type: none"> <li>Phase 1 of the UCL feasibility study (see WS1 for more details) completed in December 2021, covering options appraisal for ground source heat pumps in housing estates.</li> </ul>	
<p>Look at opportunities to add new connections to the Bunhill Heat Network, both council and private.</p>	<ul style="list-style-type: none"> <li>Successful bid for government Heat Networks Investment Programme funding for the connection of Telfer House to the Bunhill Heat Network.</li> </ul>	<ul style="list-style-type: none"> <li>Continue to look at opportunities to add new connections to the Bunhill Heat Network, both council and private on an ongoing basis.</li> </ul>
<p><b>Maximise solar power generation</b></p>		
<p>Assess the suitability of our corporate estate and housing for solar power (including the potential for solar carports) and how solar on our housing estates can best benefit residents. Install panels and battery storage where technically and financially feasible</p>	<ul style="list-style-type: none"> <li>Secured £1,276,684 of grant funding to install renewable energy sources and other decarbonisation measures</li> <li>Carried out feasibility studies on 20 schools</li> </ul>	<ul style="list-style-type: none"> <li>Deliver feasibility studies on 10 corporate buildings, including identifying the maximum solar power potential for all council buildings with gas (Q3 2022/23)</li> <li>Deliver net-zero carbon measures at schools and corporate buildings as identified through feasibility studies (2023/24 onwards pending funding)</li> <li>Installation of solar PV will begin at four council sites in Q3 2022/23 (Laycock Centre, Ecology Centre, Downham Road Depot, Fairbridge Road Depot).</li> <li>Use secured funding to deliver renewable energy sources and other decarbonisation measures in the Waste Recycling Centre, (solar PV and air source heat pumps) and New River College (ground source heat pump) (Q4 2023/24).</li> </ul>

<p>Increase uptake of solar PV on domestic and commercial properties by promoting the Solar Together scheme to residents and local businesses.</p>	<ul style="list-style-type: none"> <li>Promoted the Solar Together 2022 scheme to all eligible households.</li> </ul>	<ul style="list-style-type: none"> <li>Continue to increase uptake of solar PV on domestic and commercial properties by promoting the Solar Together scheme to residents and local businesses.</li> </ul>
<p><b>Access to fair, green energy tariffs and tackling fuel poverty</b></p>		
<p>Investigate opportunities for Islington Council in terms of the energy supply market, including the delivery of competitive green electricity tariffs for residents and businesses, a solar export tariff that encourages solar panel installation, and innovative time-of-use tariffs for all customer types, as well as the possibility of purchasing power generated in Islington by (for example) community energy schemes.</p>	<ul style="list-style-type: none"> <li>Encouraging tariff switching is currently on hold due to the energy prices crisis.</li> </ul>	<ul style="list-style-type: none"> <li>Explore future switching schemes to ensure residents and businesses are on the best tariffs.</li> </ul>
<p>Continue supporting residents in fuel poverty through our SHINE service Continue marketing to Islington businesses and residents (2020–2030)</p>	<ul style="list-style-type: none"> <li>Supported residents in fuel poverty, improving energy efficiency and maximizing incomes of Islington residents in or at risk of fuel poverty.</li> <li>Between the publication of the strategy in November 2020 and December 2021, the Energy Advice (SHINE) service has: <ul style="list-style-type: none"> <li>Supported 4,357 households</li> </ul> </li> </ul>	<ul style="list-style-type: none"> <li>Continue supporting residents in fuel poverty through our SHINE service</li> <li>The Warmth on Prescription scheme, which delivers energy efficiency measures to residents who are most vulnerable to the effects of the cold, is set to install double or secondary glazing in at least 30 properties</li> </ul>



	<ul style="list-style-type: none"> <li>○ Secured 1,296 Warm Home Discounts for total savings of £181,440, and made 12 ECO grant referrals for total savings of £136,188.</li> <li>○ Supported 88 debt and complex cases, saving people £14,904.</li> <li>○ Made 1021 home visits saving people £92,911 equating to approximately 378 tonnes of CO2</li> </ul>	
<p>Secure <a href="#">Energy Company Obligation (ECO)</a> and <a href="#">Warmer Homes</a> funding for heating and insulation measures for as long it is available.</p>	<ul style="list-style-type: none"> <li>● Delivered energy efficiency measures to 53 properties (including council and privately owned and rented homes). These measures included wall, loft and underfloor insulation and secondary glazing.</li> </ul>	<ul style="list-style-type: none"> <li>● The Warmth on Prescription scheme, which delivers energy efficiency measures to residents who are most vulnerable to the effects of the cold, is set to install double or secondary glazing in at least 30 properties</li> </ul>
<p><b>Renewable electricity purchasing</b></p>		
<p>Ensure 100% of electricity procured by the council is from certifiable renewable sources and look into procuring 100% renewable electricity for Housing estates and external clients (leisure centres and schools).</p>	<ul style="list-style-type: none"> <li>● 100% of electricity procured by the council is now from certifiable renewable sources (as of July 2021).</li> <li>● Leisure centres switched to renewable tariffs in April 2022</li> </ul>	<ul style="list-style-type: none"> <li>● Schools will switch to 100% renewable electricity in April 2023.</li> </ul>
<p>Explore the possibility of the council purchasing or building renewable electricity generation assets outside Islington to supply its energy needs.</p>	<ul style="list-style-type: none"> <li>● Initial feasibility study carried out</li> </ul>	<ul style="list-style-type: none"> <li>● Undertake detailed feasibility to explore the council purchasing or building renewable electricity generation assets outside Islington (Q4 2023/24)</li> </ul>

## Lobbying and influencing

Lobbying and influencing – we acknowledge that many elements of achieving our objectives are outside the control of the council. As a result, much of our efforts will be directed towards influencing and actively lobbying the relevant parties at regional and national level.

- Responded to consultations on the future of the Warm Home Discount, the Green Home Grant, and the Energy Company Obligation.
- Members of National Energy Action who advocate for tariff equality

- Lobbying and influencing items are now being coordinated at the NZC programme level

# Page 70 Priority 4: The Green Economy and Planning

## Green economy

Deliver on our net zero target whilst assuring the economic success and vitality of our borough by working closely with the 21,000 businesses in the borough, most of them small or micro-sized.

What we said in Vision 2030	What we have achieved since Vision 2030 (2021/22)	Next Steps
To obtain social value that delivers the council's net zero carbon ambitions	<ul style="list-style-type: none"> <li>• We held an inaugural meeting with our anchor institutions in February 2022 to agree priorities for development.</li> <li>• We have produced and published our Progressive Procurement Strategy and implementing our commitment</li> <li>• We have increased social value in our council contracts and S106 agreements, e.g. in our most recent ITT for highways,</li> </ul>	<ul style="list-style-type: none"> <li>• Mapping our current affordable workspace portfolio and pipeline to encourage more green innovation and entrepreneurship and develop the specification for a 'net zero' focussed affordable workspace</li> <li>• Embed net zero commitments into contractual arrangements with new affordable workspace providers</li> </ul>

	<p>we increased our social value requests from 20% to 30% to increase local jobs</p> <ul style="list-style-type: none"> <li>• The Affordable Workspace team requires providers to set out how they will address net zero. We are currently working to embed commitments into the contractual arrangements.</li> </ul>	<ul style="list-style-type: none"> <li>• Research the benefit of developing and creating more Makerspace for craftpersons in Islington</li> <li>• Develop business case to fund a 'net zero' incubator programme</li> <li>• Set up sub-groups to support the Anchor Institutions Network to develop action plans for their priorities – jobs and employment, support local businesses and reducing our carbon emissions</li> <li>• Monitor that the principles of circular economy are embedded in the procurement process</li> <li>• Develop and publish advice and guidance to help potential suppliers understand our progressive procurement policy, including circular economy principles where appropriate.</li> <li>• Encourage potential suppliers to work together with us in achieving social value through procurement.</li> <li>• Influence the conversation about Islington GPs' Clean Air programme and to reduce carbon emissions in GP's daily operations.</li> <li>• Develop green social value asks for integration into council commissioning processes</li> <li>• Develop Supplementary Planning Guidance to ensure alignment between heritage preservation and net zero objectives</li> <li>• Engage with North London Waste Board to deliver commitments on apprentices</li> <li>• Ensure that pre-employment training is offered through Mayor's Green Academy, to ensure local residents are placed to secure NLWB opportunities</li> </ul>
--	---	---

		<ul style="list-style-type: none"> <li>• Introduce new social value monitoring and management framework, to capture all green social value activities</li> <li>• Encourage to increase social value weighting to 30% across all council contracts and S106 agreements</li> <li>• Establish a framework with our procurement to embed the need for green skills in our council contracts and S106 agreements</li> </ul>
<p>Ensure the council's Skills Strategy incorporates net Zero Carbon ambition</p>	<ul style="list-style-type: none"> <li>• We worked with London Councils on a Central London Forward research commission, to inform local skills planning and to identify the green skills and jobs (current and forecast).</li> <li>• Commissioned WPI to provide a report on Islington green jobs.</li> <li>• Drafted an Islington Green Skills Strategy to incorporation into our Community Wealth Building Strategy.</li> </ul>	<p>Implement the Green Skills Strategy:</p> <ul style="list-style-type: none"> <li>• Identify skills, jobs, apprenticeships and training requirements across council's NZC work streams and estimate pipeline requirements</li> <li>• Identify and map out those jobs that are most at risk of being replaced by decarbonisation</li> <li>• Develop progression pathways map on the existing offer and identify gaps for green construction</li> <li>• Apply and attract funding to pursue local priorities i.e. to support local small businesses/sole traders to secure necessary accreditations to be able to carry out retrofit works</li> <li>• Create apprenticeship agency for anchor institutions and identify apprenticeships opportunities with anchor institutions, sub-regional partnerships and our local town centres – especially as part of funding bids</li> <li>• Establish a monitoring framework to record and measure green training and green job referrals/placements</li> <li>• Initiate the green skills programme secured as part of the Holloway site S106 agreement</li> <li>• Facilitate flexible placements ('passporting') for existing apprentices on council works, as part</li> </ul>

Increasing awareness and engagement	<ul style="list-style-type: none"> <li>• Supported Angel.London in establishing the Angel Sustainability Forum for businesses to deliver practical projects</li> <li>• Opened discussions with Islington Sustainable Energy Partnership (ISEP) and LIFT to expand training and apprenticeship opportunities in the knowledge/arts/built environment sector</li> <li>• Promoted local green jobs through iWork, holding an information session to raise awareness of retrofit as a career</li> <li>• Launched Islington's Library of Things, a reuse and repair shop in Finsbury Park.</li> <li>• Supported Bright Sparks through facilities support, through its Resident Support Scheme partnership and through its furniture reuse collection service.</li> <li>• Published our Circular Economy Action Plan</li> <li>• Launched a Circular Economy grant scheme for businesses with support from ReLondon.</li> <li>• Worked with Islington Sustainable Energy Partnership (ISEP) to support the review and refresh of their business plan</li> </ul>	<p>of scheduled programmes to ensure they undertake green skills on-job training</p> <ul style="list-style-type: none"> <li>• Continue the work with LIFT and ISEP to set up a programme of sustainability for SMEs. This will take the form of CPD/masterclasses/workshops</li> <li>• Run engagement workshop(s) with business community to co-design a strategic approach to engaging with influencing the 24,000 businesses in the borough.</li> <li>• Increasing promotion of 'green' jobs through iWork and developing a stronger outreach offer.</li> <li>• Ensure that 4-19 year olds are well informed about green economy issues and 'green' jobs and skills through 100 Hours of Work programme</li> <li>• Engage with Islington's 'anchor institutions' to encourage and promote circular economy practices in their procurement and management of their assets.</li> <li>• Work with our ISEP to increase their membership, raise awareness of the circular economy and to celebrate the best circular economy practices at the Islington Sustainability Awards</li> <li>• Create and promote a business directory of local suppliers for retrofitting activities, for private homeowners – with necessary green accreditations</li> <li>• Work with ACL and local FE colleges to create short introductory programmes and pathways to broaden access to the green economy</li> </ul>
-------------------------------------	--	---

		<ul style="list-style-type: none"> <li>• Enhance STEM offer to increase pipeline through schools</li> <li>• Launch and promote food growing courses as part of Adult Community Learning</li> <li>• Expand provision within the LIFT programme for taster programmes, internships and other skills initiatives for young people with green tech/professional services employers</li> <li>• Explore opportunity for a green-themed bid/proposal i.e. Shared Prosperity Fund under the 'Communities and Place' theme</li> <li>• Develop a footfall strategy for LTN areas, with animation programme, to promote benefits of reduced traffic/congestion</li> <li>• Develop business case to secure additional Local Economy officer, focussed on business adaptation and a 'just transition' for businesses impacted by LTNs</li> </ul>
Influencing consumer behaviour	<ul style="list-style-type: none"> <li>• Launched a shop local businesses directory hosted by <u>My Virtual Neighbourhood</u>.</li> <li>• Commissioned a construction directory</li> </ul>	<ul style="list-style-type: none"> <li>• Work with London Councils and others to develop a lobbying approach to influence regional and national policy.</li> <li>• Continue to maintain and update our directories and develop a 'green' category within the Business Directory and Construction Directory to identify businesses who operate good sustainability practices.</li> <li>• Continue to work in partnership with Bright Sparks and similar organisations to develop further opportunities for repair and reuse and Library of Things models in Islington.</li> <li>• Introduce training module on green behaviours for LBI employees</li> <li>• Develop communications and public affairs campaign, to promote good practice – in line with Net Zero programme communications plan</li> </ul>

## Planning:

We will ensure that our development and planning policies require growth and new developments meet the highest emissions reductions targets possible.

What we said in Vision 2030	What we have achieved since Vision 2030 (2021/22)	Next Steps
<b>New Local Plan and Supplementary Planning Document</b>		
Take the Draft Local Plan forward to adoption. Once adopted, the Local Plan will cover the period up to 2035/36.	<ul style="list-style-type: none"> <li>Completed consultation on changes to the Draft Plan in May 2021, with analysis then completed and submitted to the Inspector.</li> <li>The Draft Plan proceeded to the Examination in Public in September 2021, and public hearings closed on 1 October 2021.</li> </ul>	<ul style="list-style-type: none"> <li>Finalise the new Local Plan (dependent on the Inspectors Binding Report)</li> <li>Complete final round of consultation (expected to begin in Summer 2022)</li> <li>Subject to final consultation and the Planning Inspector's approval, the new Local Plan can move to adoption (expected in Autumn 2022)</li> <li>Ongoing implementation of new policies once new Plan formally adopted</li> </ul>
Deliver an Islington Zero Carbon Supplementary Planning Document (SPD).	<ul style="list-style-type: none"> <li>Secured funding to appoint an officer to develop supplementary planning guidance on delivering net zero carbon improvements to buildings.</li> </ul>	<ul style="list-style-type: none"> <li>Appoint SPD officer</li> <li>Develop and adopt SPD</li> <li>Develop brief for technical study to support development of SPD including best practice guidance on 'model houses'. Model houses will be based on typical Islington typologies including Georgian and Victorian Street properties.</li> </ul>
<b>Enforcement</b>		
Continue to robustly enforce the existing Local Plan policies and standards,		

<p>including by securing carbon off setting contributions from all relevant development proposals, until they are replaced by the new Local Plan.</p>	<ul style="list-style-type: none"> <li>• Secured carbon offsetting contributions for all applicable developments</li> <li>• £1.4 million collected in 2021/2022 to be allocated in accordance with the agreed processes</li> <li>• All relevant planning policies and requirements robustly defended as part of application negotiations</li> </ul>	<ul style="list-style-type: none"> <li>• Existing planning policy requirements will continue to be secured and once adopted, all applications will be subject to the requirements of the new Local Plan</li> <li>• Through the pre-application process, seek to secure sustainability standards as set out in the emerging Local Plan</li> </ul>
<p>Continue to enforce planning permissions and obligations including through collection of carbon offset monies from developers, and through allocation and monitoring of funds secured.</p>		

## Priority 5: Natural Environment, Waste Reduction and Recycling

Integrate our ongoing activities in recycling and reducing waste and managing our natural environment.

What we said in Vision 2030	What we have achieved since Vision 2030 (2021/22)	Next steps
<b>Natural Environment</b>		
<b>Tree canopy cover</b>		
<p>We will aim to increase the canopy cover in the Borough from 25% to 27% by 2030 by protecting our trees and open spaces and increasing our woodland in line with our Biodiversity Action Plan</p>	<ul style="list-style-type: none"> <li>• Developed a central tree planting budget and secured £210,000 per annum for tree planting from the Capital Growth programme.</li> <li>• Commissioned reports to establish baseline tree data and allow for focused tree planting and to inform development of Urban Forest Management Policy</li> <li>• Resident engagement to raise awareness and encourage protection of our trees</li> </ul>	<ul style="list-style-type: none"> <li>• Complete initial scoping for a private tree planting scheme</li> <li>• Formally launch Tree Warden Scheme</li> <li>• Implement online donation process to fund tree planting in public spaces</li> <li>• Develop draft Urban Forest Management Policy</li> </ul>



	<p>including delivery of tree management seminars and tree walks</p> <ul style="list-style-type: none"> <li>Completed soft launch of Tree Warden Scheme at Islington's 2021 climate festival</li> </ul>	
Investigate trialing the planting of fruit trees	<ul style="list-style-type: none"> <li>Community orchard planted at Highbury Quadrant estate</li> </ul>	<ul style="list-style-type: none"> <li>Trialing planting of fruit trees will be investigated as part of Urban Forest Management Policy and Greener Together programme</li> </ul>
<b>Greener Together Programme</b>		
Develop a Community Food Growing Strategy with the aim of identifying more opportunities for food growing in the borough.	<ul style="list-style-type: none"> <li>Scoped Greener Together, a wider programme of work, and secured funding for three years. Appointed Programme Manager and delivery team.</li> <li>Launched <a href="#">Islington Greener Together</a> in March 2022</li> <li>Commissioned Octopus Network to produce a set of community food growing recommendations which will inform the Greener Together programme</li> <li>Secured funding to develop a master plan of greening opportunities on the public highways</li> <li>Secured £100,000 through the Natural Environment Investment Readiness Fund (NEIRF) administered by the Environment Agency for a 'Green Finance for Islington Pocket Park Framework'. The bid incorporated a stub road audit of 1000 sites, green infrastructure project pipeline, new bespoke green investment financing and proposed strategic assessment tools</li> <li>Secured an additional £140,000 per annum to invest in greening improvements on the highways</li> </ul>	<p>Develop and deliver a programme to support greening initiatives across the borough, including work to:</p> <ul style="list-style-type: none"> <li>Undertake scoping and base-line data for the establishment of a Green Infrastructure Strategy once Greater London Authority have produced their guidance in late 2022</li> <li>Develop a boroughwide pocket park framework to accelerate delivery of green infrastructure in the public realm, in accordance with community needs</li> <li>Deliver the first year of the Islington Greener Together programme and first schemes on the ground</li> <li>Commission and establish the <a href="#">Greener Together Champions programme</a> to provide support, training and build capacity for those communities managing and maintaining the new green spaces</li> <li>Develop a financial model to enable Environmental, Social and Governance investment into</li> </ul>

	<ul style="list-style-type: none"> <li>Secured £150,000 for funding for a new Housing Community Gardening Team to improve the planting/biodiversity on estates and support/develop community gardening</li> </ul>	<p>delivering green infrastructure in the borough</p> <ul style="list-style-type: none"> <li>Define, specify and implement best working practice of green infrastructure</li> <li>Improve skills and development training for staff in the delivery of cross-departmental green infrastructure</li> </ul>
Review opportunities to use car park spaces for tree planting or sustainable urban drainage systems.	<ul style="list-style-type: none"> <li>Opportunities identified through our Public Realm Design Review Panel (PRDRP).</li> </ul>	<ul style="list-style-type: none"> <li>Ongoing through the PRDRP and will be explored as part of the development of the Urban Forest Management Policy and Greener Together programme.</li> </ul>
<b>Improving Biodiversity and Engagement with Nature</b>		
Apply planning policies that seek to protect and enhance biodiversity and the borough's green infrastructure, supported by guidance where appropriate.	<ul style="list-style-type: none"> <li><a href="#">Biodiversity Action Plan</a> published September 2020</li> <li>Conditioned appropriate recommendations in ecological submissions from developers</li> </ul>	<ul style="list-style-type: none"> <li>Continue to apply planning policies that seek to protect and enhance biodiversity and the borough's green infrastructure</li> <li>Develop guidance for developers on how to comply with new Biodiversity Net Gain legislation in an Islington context</li> </ul>
		<p>We will continue to deliver actions to enhance biodiversity in the borough and increase access to nature for residents, including:</p> <ul style="list-style-type: none"> <li>Deliver a programme of events and activities for people to learn about nature</li> </ul>

		<ul style="list-style-type: none"> <li>• Enhance biodiversity through improved management of parks and green spaces</li> <li>• Undertake annual review of the Biodiversity Action Plan</li> <li>• Support community involvement in managing spaces for biodiversity</li> <li>• Run the annual <a href="#">Islington in Bloom</a> competition</li> <li>• Identify local Sites of Importance for Nature Conservation (SINC) that have potential to be enhanced to Borough Grade status and make biodiversity improvements where possible</li> </ul>
<b>Lobbying and influencing</b>		
		<ul style="list-style-type: none"> <li>• Encourage TfL to look at the possibility of planting trees in roads they manage.</li> <li>• Lobby the government to require developers to contribute to a street-tree planting fund if it is infeasible to plant on-site.</li> <li>• Influence Greater London Authority around their Green Infrastructure Strategy guidance, and Natural England's Accessible Natural Greenspace Standard (ANGSt) and the <a href="#">Nature Recovery Network</a>.</li> </ul>
<b>Waste Reduction and Recycling</b>		

What we said in Vision 2030	What we have achieved since publishing Vision 2030	Next steps for 2022/2023
<p>Reduce waste focusing on food waste and single use plastic</p>	<p>Reducing food waste</p> <ul style="list-style-type: none"> <li>Supported food sharing campaigns, apps (e.g. Too Good to Go) initiatives.</li> </ul> <p>Tackling single use plastic</p> <ul style="list-style-type: none"> <li>Made 23 public water sources availability via the Refill App.</li> </ul> <p>Increasing reuse</p> <ul style="list-style-type: none"> <li>Launched Library of Things at the Finsbury Park Bright Sparks store, 81 items borrowed between 1 November and 31 December 2022, saving a tonne of waste.</li> <li>Delivered two repair cafes (textiles and electricals) at the Climate Festival 2021</li> <li>Completed trial bulky waste (reuse) service on estates. Outcomes and ideas fed into new Reduction and Recycling Plan for 2023-2025.</li> </ul> <p>Circular economy:</p> <ul style="list-style-type: none"> <li>Published Circular Economy Action Plan (January 2022)</li> <li>Introduced principles in the new Local Plan requiring developers to adopt a circular economy approach to building design and construction (due to be adopted in late 2022).</li> </ul> <p>Partnership working:</p>	<p>Reducing food waste</p> <ul style="list-style-type: none"> <li>Continue to support composting initiatives including encouraging community composting on estates in and community gardens.</li> </ul> <p>Reduce single use plastic</p> <ul style="list-style-type: none"> <li>Deliver a second Low Plastic Zone at Caledonian Road.</li> <li>Enable installation of new drinking water fountains and promote use of water bottle refill apps and locations.</li> </ul> <p>Increase reuse and facilitate move to Circular Economy</p> <ul style="list-style-type: none"> <li>Deliver repair cafes/reuse events, and a Reusable Lunch Box Scheme at Chapel Market.</li> <li>Review Library of Things operation and look at options for expansion.</li> </ul> <p>Continue partnership working with North London Waste Authority to deliver waste minimisation and recycling communications campaigns</p> <ul style="list-style-type: none"> <li>We will deliver various communications campaigns to promote waste reduction and recycling.</li> </ul>

	<ul style="list-style-type: none"> <li>• Worked in partnership with NLWA to deliver waste minimisation and recycling communications campaigns, including: Not a Minute to Waste, Real Nappy Week, National Food Waste Action Week and National Recycling Week in 2021</li> </ul> <p>We responded to four government consultations, including:</p> <ul style="list-style-type: none"> <li>• The National Resource and Waste Strategy</li> <li>• Deposit Return Scheme (DRS)</li> <li>• Extended Producer Responsibility (EPR)</li> <li>• London Environment Strategy (LES)</li> </ul>	
Maximise recycling rates	<ul style="list-style-type: none"> <li>• Current household recycling rate of around 31%</li> <li>• Installed Split litter/recycling bins across all main roads</li> <li>• Expanded food waste collections to 1,400 extra properties</li> <li>• Launched new 'accessible' recycling bin design with 12 now in place</li> <li>• Secured £100,000 to improve communal recycling sites at estates, with various projects underway</li> <li>• Established new tenancy agreement and House in Multiple Occupation (HMO) landlord license clauses with the aim to improve access to recycling for residents</li> <li>• 'Reverse lid' recycling bins now rolled out as standard, leading to reduced contamination in recycling bins</li> </ul>	<ul style="list-style-type: none"> <li>• Improve communal and estate recycling including expansion of food waste and offer of mini recycling bag services (subject to funding).</li> <li>• Maximise commercial recycling through interventions including a back-office system upgrade to improve efficiency, introduction of on-board weighing technology, and expansion of commercial food waste collection.</li> <li>• Develop a programme of customer education on recycling and waste, and improve awareness of the commercial waste service through better marketing</li> </ul>

	<ul style="list-style-type: none"> <li>• Implemented contaminated bin clearance and charging policy to encourage landlord action on recycling. Management action taken following contamination incidents. Contamination rates are down as result of this and other measures.</li> <li>• Completed commercial waste strategy looking at expanding services in the borough</li> </ul>	<ul style="list-style-type: none"> <li>• Resume financial incentive for residents to reuse their bulky waste post-Covid.</li> <li>• Encourage and promote community action to increase recycling through delivery of Recycling Champions Scheme.</li> </ul>
Maximise local waste sites and ensure Islington has sufficient infrastructure to manage all the waste it produces	<ul style="list-style-type: none"> <li>• Review of collection and processing arrangements has been completed, with the decision not to proceed for now due to financial implications.</li> <li>• Supported national and regional campaigns on food waste, repair and flexible plastics recycling</li> </ul>	
<b>Lobbying and advocacy</b>		
<ul style="list-style-type: none"> <li>• Government to Progress proposals for bans on certain types of unnecessary single use plastic.</li> <li>• Government to progress proposals for charges on certain single use items, such as plastic bags and coffee cups.</li> <li>• Government to progress proposals for a tax on plastic packaging that does not contain 30% recycled content.</li> </ul>	<ul style="list-style-type: none"> <li>• We responded positively and constructively to all relevant government consultations and have separately written to the government urging them to progress a range of measures.</li> </ul>	<ul style="list-style-type: none"> <li>• We will continue to monitor legislative and policy changes and respond to government consultations.</li> </ul>



This page is intentionally left blank



## Workplan 2022/23

### 21 July 2022 19:30

1. Scrutiny Review- Overview of the Circular Economy Action Plan
2. Quarter 4 Performance Indicator Reports 2021/22 - Libraries and Heritage
3. Net Zero Carbon Programme review 2021-22
4. Workplan 2022/23

### 6 September 2022 19:30

1. Scrutiny Review- Green Economy and Planning
2. Annual Report of the Executive Member for Inclusive Economy and Jobs
3. Q1 Performance Report (2022/23) – Environment & Transport
4. Q1 Performance Report (2022/23) – Employment and Skills
5. Menstrual Waste
6. Workplan 2022/23

### 3 October 2022 19:30

1. Scrutiny Review- Council Buildings and Homes
2. Q1 Performance Report (2022/23) – Libraries and Heritage
3. Q1 Performance Report (2022/23) – Net Zero Carbon Programme
4. Executive Member for Environment and Transport - Annual Performance Report
5. Workplan 2022/23

### 10 November 2022 19:30

1. Scrutiny Review- Natural Environment
2. Q2 Performance Report (2022/23) – Environment & Transport
3. Q2 Performance Report (2022/23) – Employment and Skills
4. Dr Dan and Urban Agriculture
5. Workplan 2022/23

### 23 January 2023 19:30

1. Scrutiny Review- Transport
2. Last Mile Presentation
3. Q2 Performance Report (2022/23) – Libraries and Heritage
4. Q2 Performance Report (2022/23) - Net Zero Carbon Programme
5. Workplan 2022/23

### 20 February 2023 19:30

1. Scrutiny Review- Draft recommendations
2. Q3 Performance Report (2022/23) – Environment & Transport

3. Q3 Performance Report (2022/23) – Employment and Skills
4. Workplan 2022/23

**27 March 2023 19:30**

1. Scrutiny Review – Final report
2. Q3 Performance Report (2022/23) - Libraries and Heritage
3. Q3 Performance Report (2022/23) Net Zero Carbon Programme
4. Workplan 2022/23

**18 April 2023 TBC**

1. Special Public Meeting

**Speakers to be confirmed**

- North London Waste Authority
- Better Leisure